

A group of children are playing in a grassy schoolyard. Some are holding hands in a circle, while others are jumping rope. In the background, there is a single-story school building with blue doors and windows. The scene is bright and sunny.

# West Hillsborough Elementary School

Multi Purpose Room

02.13.24



# Agenda

- What we heard
- Site Connections
- The Plan
- Material Inspiration
- Massing





# Key Points

## Teachers

### Learn

- Windows
- Natural Light
- Sensory area for outdoor connection
- High ceilings
- Acoustics
- Partitions for separate spaces
- Pin up walls

### Perform

- Opens up for outdoor seating
- Evening performances
- Steps up to stage
- Deeper stage centered on long wall
- Musicals
- Wax Museum showcase
- Space to seat 450 people

### Eat

- Indoor Outdoor Connection
- Rainy day lunch retreat
- Foldable tables in walls
- Floors that are easily cleaned
- Kitchen to run food services
- Overhangs for lunch
- Teacher lounge that can hold all staff: 53+
- Multi-stall restrooms – recess access

### Play

- Functional gym size: basketball and volleyball
- PE office space
- PE storage space
- Host recreation programs





# Key Points

## Parents

Community	Assembly	Engagement	Environment
<ul style="list-style-type: none"><li>- New building should help build belonging and community</li><li>- Connection to Hillsborough heritage and history – Julia Morgan</li></ul>	<ul style="list-style-type: none"><li>- Provide stands or bleachers so parents can watch their children play games</li><li>- Have AV lighting and electrical built in for theater</li><li>- Seat all grades</li><li>- Ensure there is adequate seating for afterschool events</li><li>- School assemblies held once a month</li><li>- Bingo, talent shows, book fairs and musicals</li></ul>	<ul style="list-style-type: none"><li>- Addressing neuro-diversity: sensitivity and acoustics</li><li>- Display student artwork</li><li>- Be flexible and be able to quickly change from program to program</li></ul>	<ul style="list-style-type: none"><li>- Have lots of natural light and air flow</li><li>- Concern for smoke and air quality</li><li>- Extended roof for shade</li></ul>





# Program Uses

- **Main Court**

- All School Assemblies : 1/month; students sit on floor; capacity for 400 sitting on floor
- Lunch: served in two time periods; Plan for 200 per seating in both interior and exterior space
- Performance/Musicals are by grade; current seat count of 320 is acceptable, but work to add more if possible

- **Stage**

- Maximum on stage: 75 (currently half on stage and half on stair risers)
- Use existing approach but confirm capacity alongside existing MPR

- **Warming Kitchen**

- Primarily for Lunch service

- **Restrooms**

- All gender and traditional to be discussed further

- **Staff Lounge and Staff Toilets** – remain in existing

- **Storage** – to be developed based on preferred scheme



# Qualitative Considerations

- Building connection to outdoors and neighbors
- Main Court
  - East West Court orientation (and building is best)
  - Desired connection to the outdoor space for increased flexibility and expanded use
  - Good daylighting
- Stage
  - Stairs at front preferred for efficiency of moving students
- Warming Kitchen
  - Access from inside and outside
- Restrooms
  - Access from site is useful
  - Near dining areas and field are desired
- Staff Lounge and Staff Toilets - improve
- Storage — to be developed based on preferred scheme



A group of children are playing in a schoolyard. Some are holding hands in a circle, while others are jumping rope. In the background, there is a single-story school building with blue doors and windows. The scene is set on a grassy field under a clear blue sky.

# Site Considerations

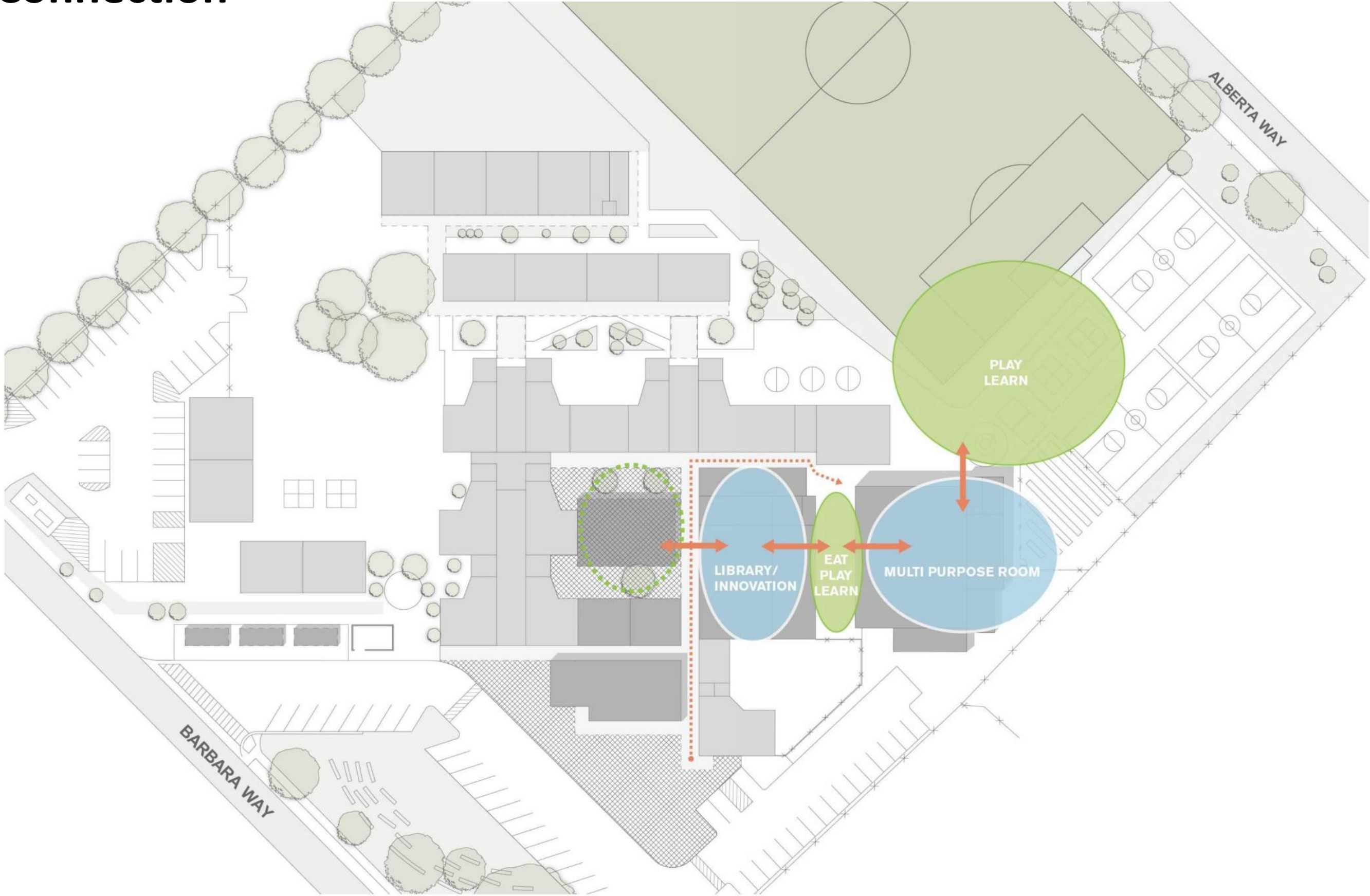


# Site Plan





# Site Connection





# Campus Inspiration



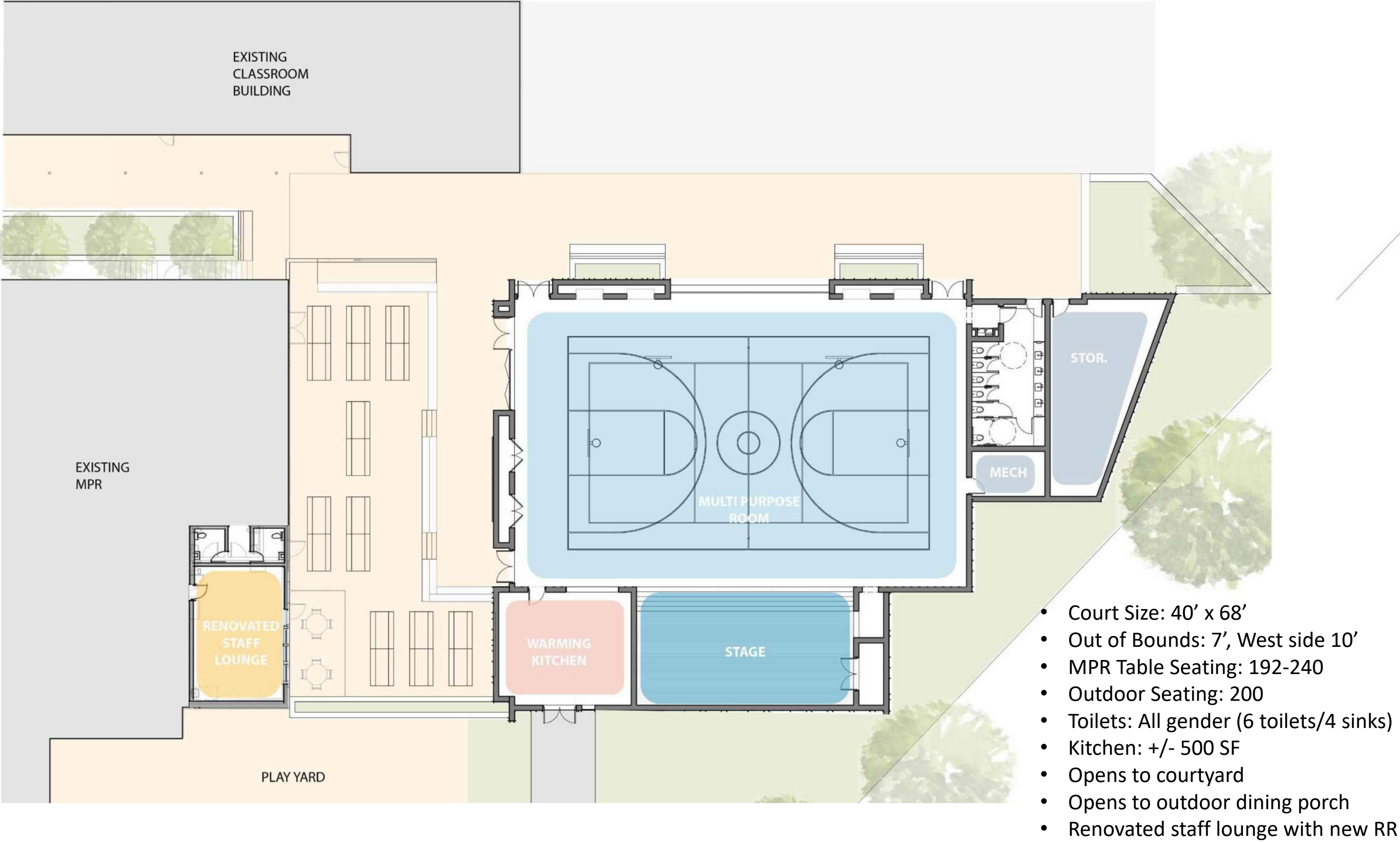




# Plan Layout



# Modified Plan

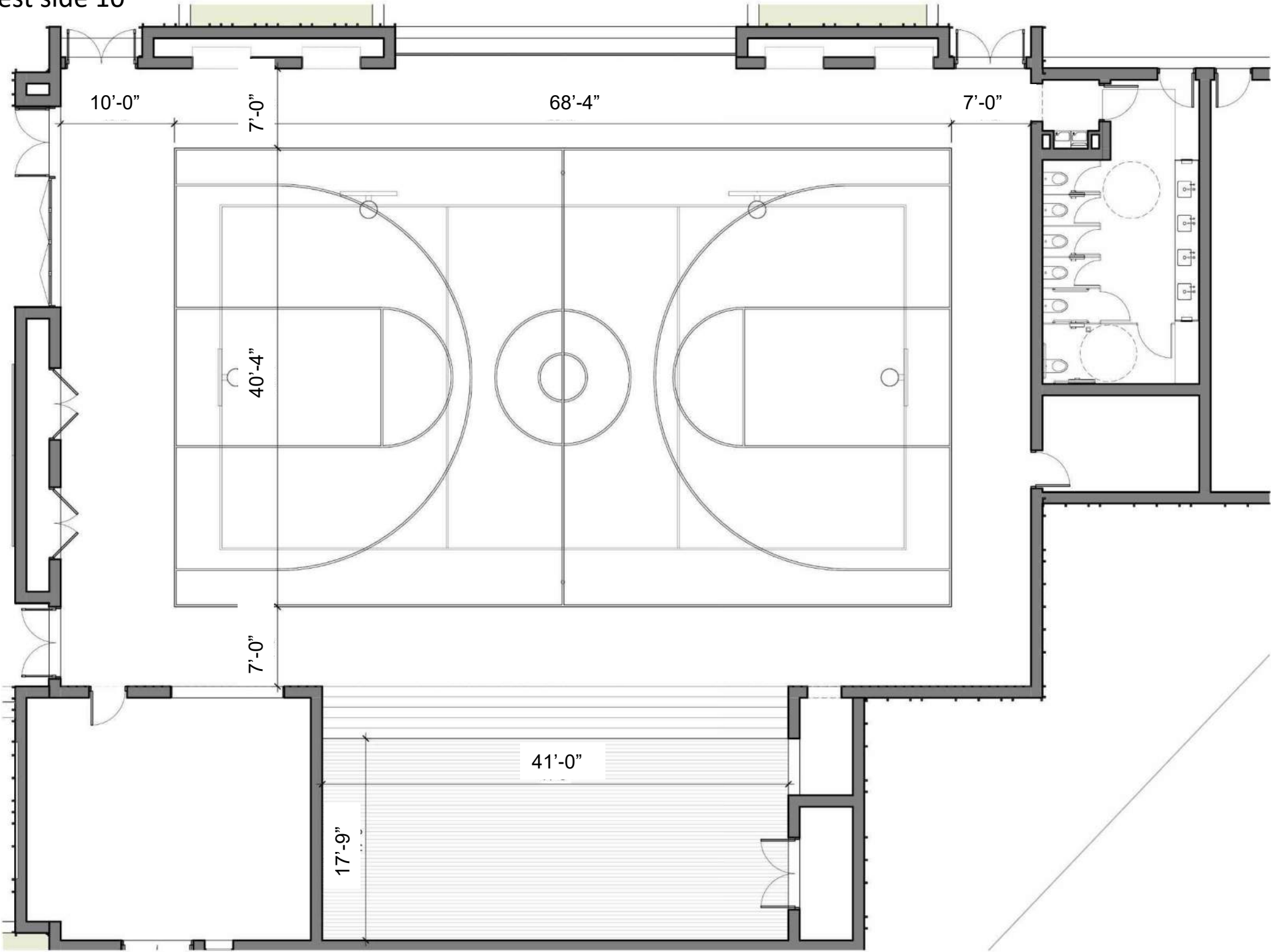


- Court Size: 40' x 68'
- Out of Bounds: 7', West side 10'
- MPR Table Seating: 192-240
- Outdoor Seating: 200
- Toilets: All gender (6 toilets/4 sinks)
- Kitchen: +/- 500 SF
- Opens to courtyard
- Opens to outdoor dining porch
- Renovated staff lounge with new RR



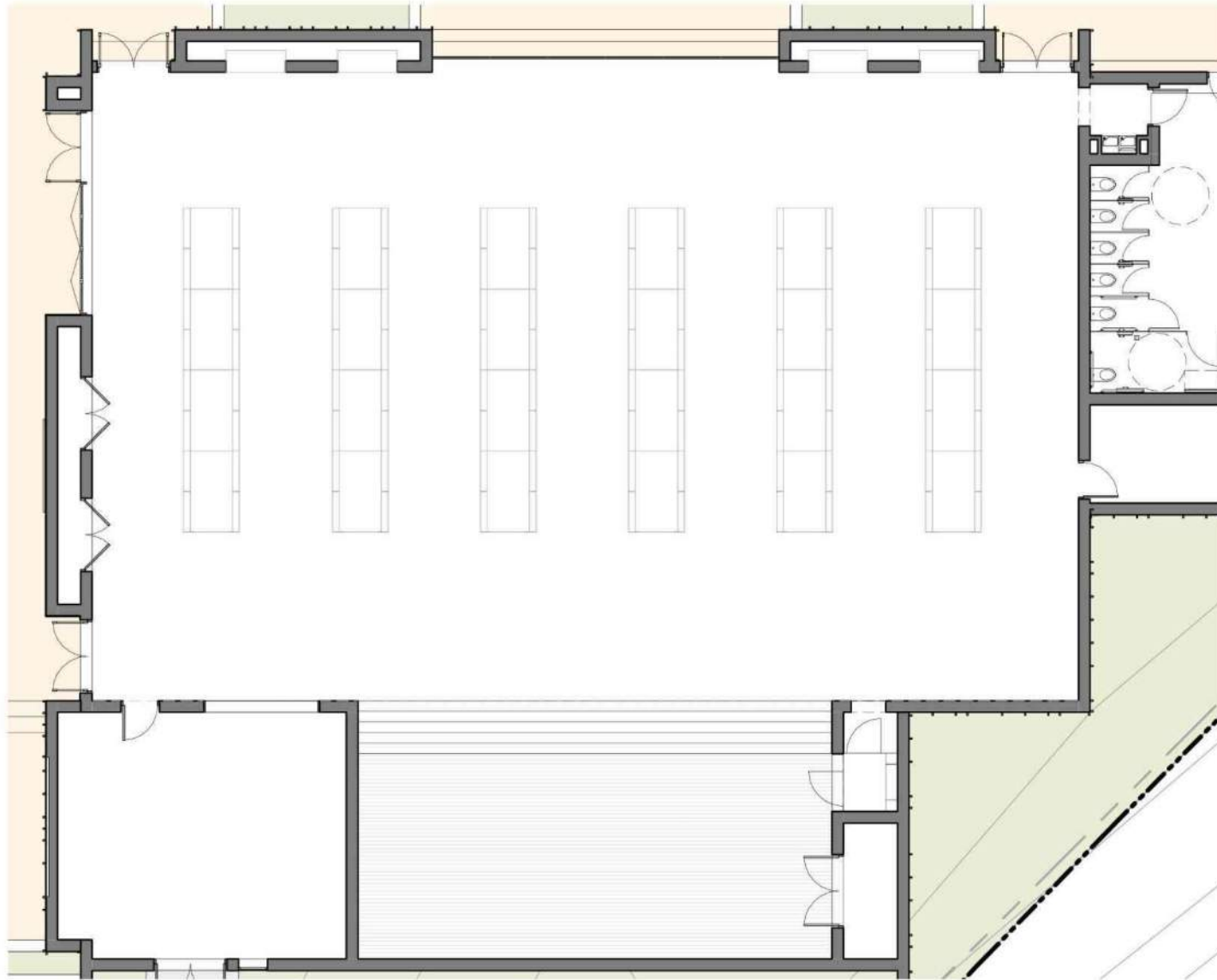
# Court Layout

- Court Size: 40' x 68'
- Out of Bounds: 7', West side 10'
- (4) BB Hoops
- VB Sleeves





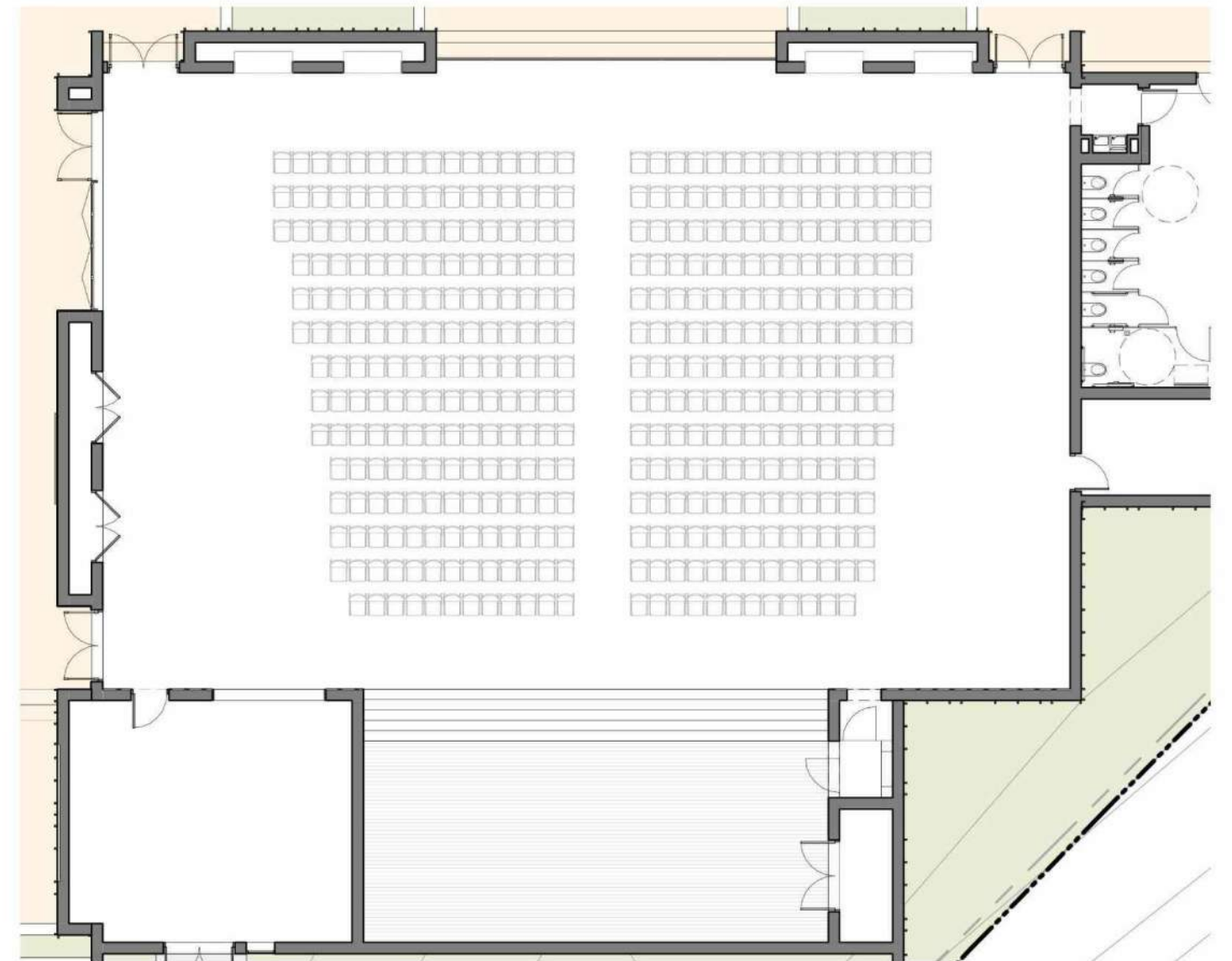
# Seating Layout



**Lunch: 192-240 seats**

Triple table set per pocket/ 12 tables total.

(option to have quads in each pocket for capacity of 256-320)



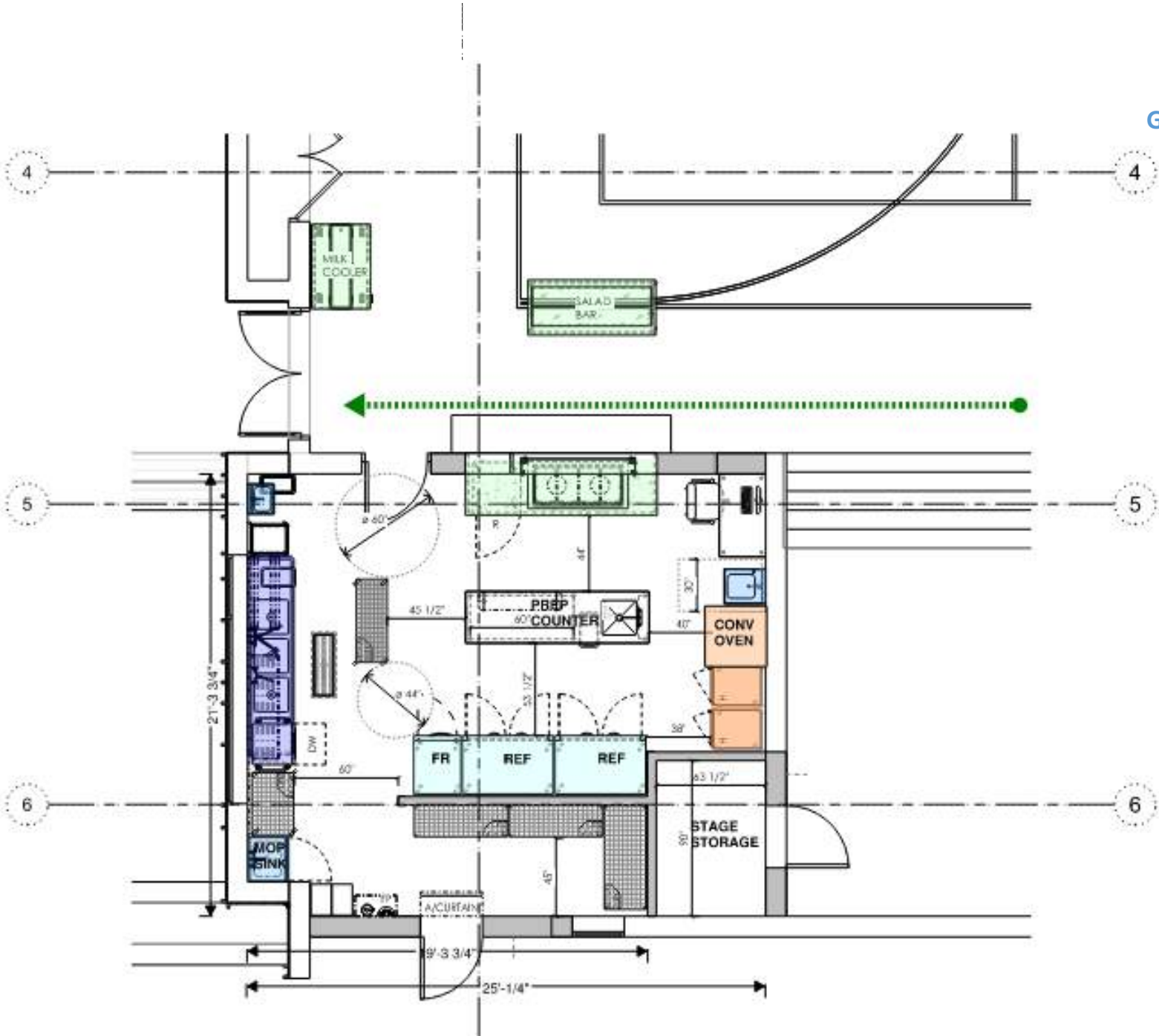
**Performances: 398 seats**

Preliminary layout. Sightlines to be confirmed with theater consultant.

Will need to review max occupancy and RR count with DSA

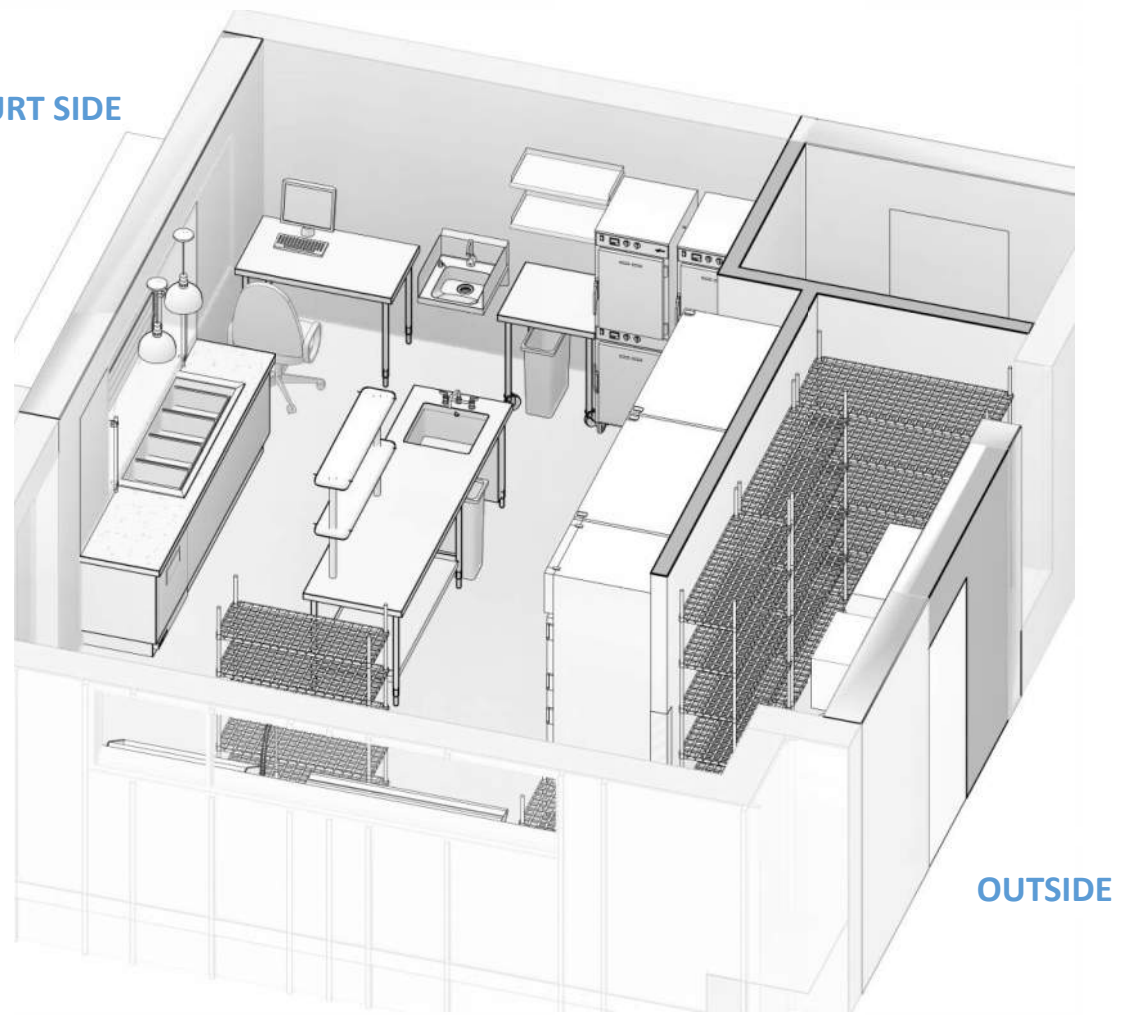


# Kitchen Plan Layout



- Serving
- Keeping warm
- Keeping cold
- Cleaning

GYM COURT SIDE



OUTSIDE

- 4 door refrigerator (2) + single door freezer
- Sink included w/drying racks
- Hand sink 4 (1 ADA)
- Mop sink included
- Hot holding units 2
- Prep Table 1
- Milk cooler
- Salad Bar
- Hot dish up (for boxed meals and available for future)
- Dry storage **21 l.f.** (5 tier) included
- Manager desk





# Exterior Materials

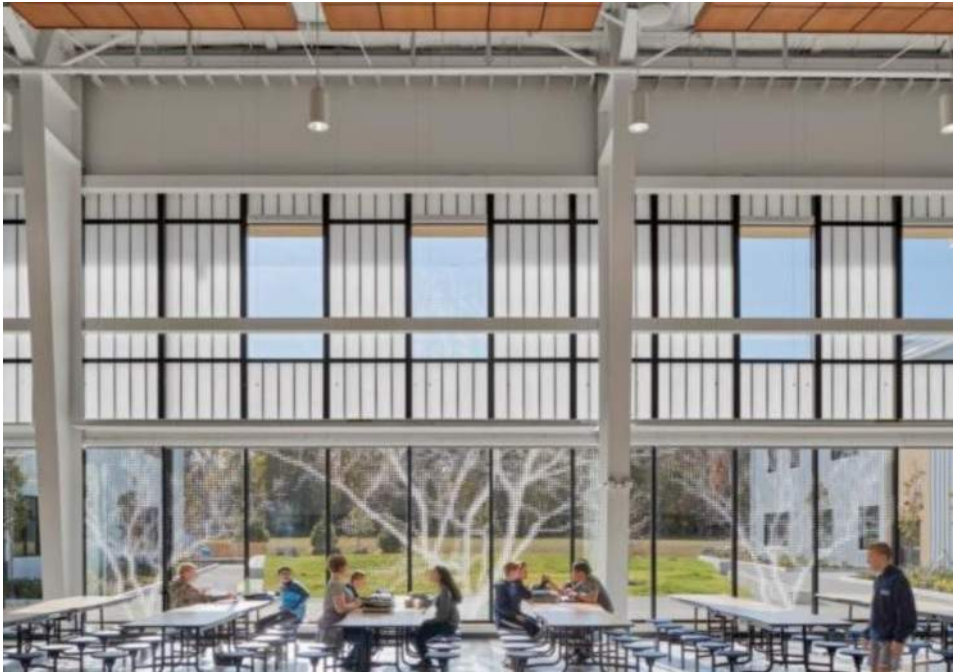


# Campus Inspiration





# Material/Texture Inspiration





# Accent/Color







Massing



12.04.23 Massing Options



Gable



Butterfly



Shed



# Butterfly Scheme





# Butterfly Scheme





# Butterfly Scheme





# Butterfly Scheme





# Butterfly Scheme





# Butterfly Scheme





# Butterfly Scheme



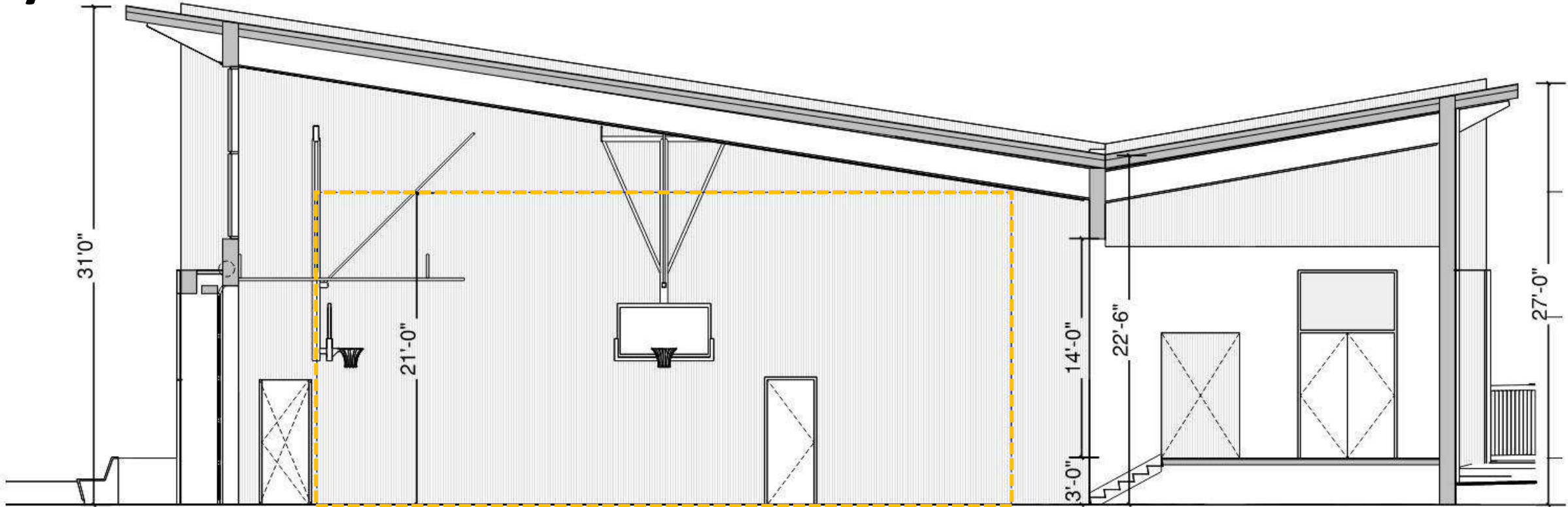


# Butterfly Scheme

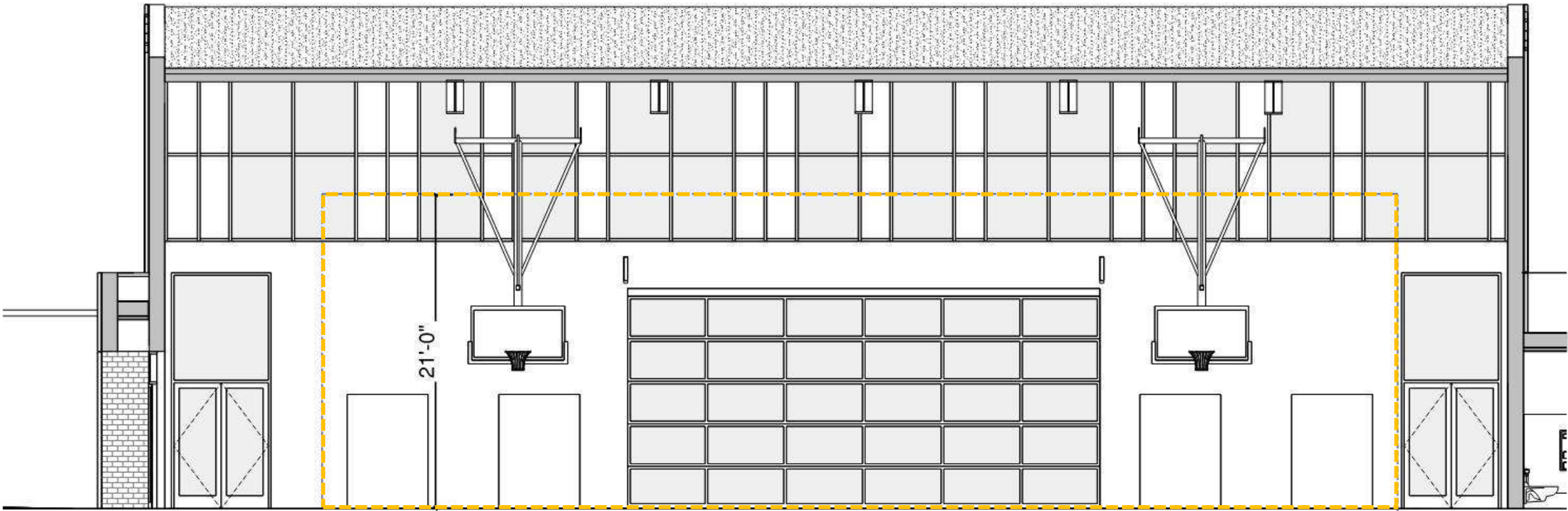




# Butterfly Scheme



North/South Section



East/West Section



# Butterfly



Board and Batten Hardie Plank



Green Wall



Board and Batten Hardie Plank



Accent Wall/Tile





Thank You