



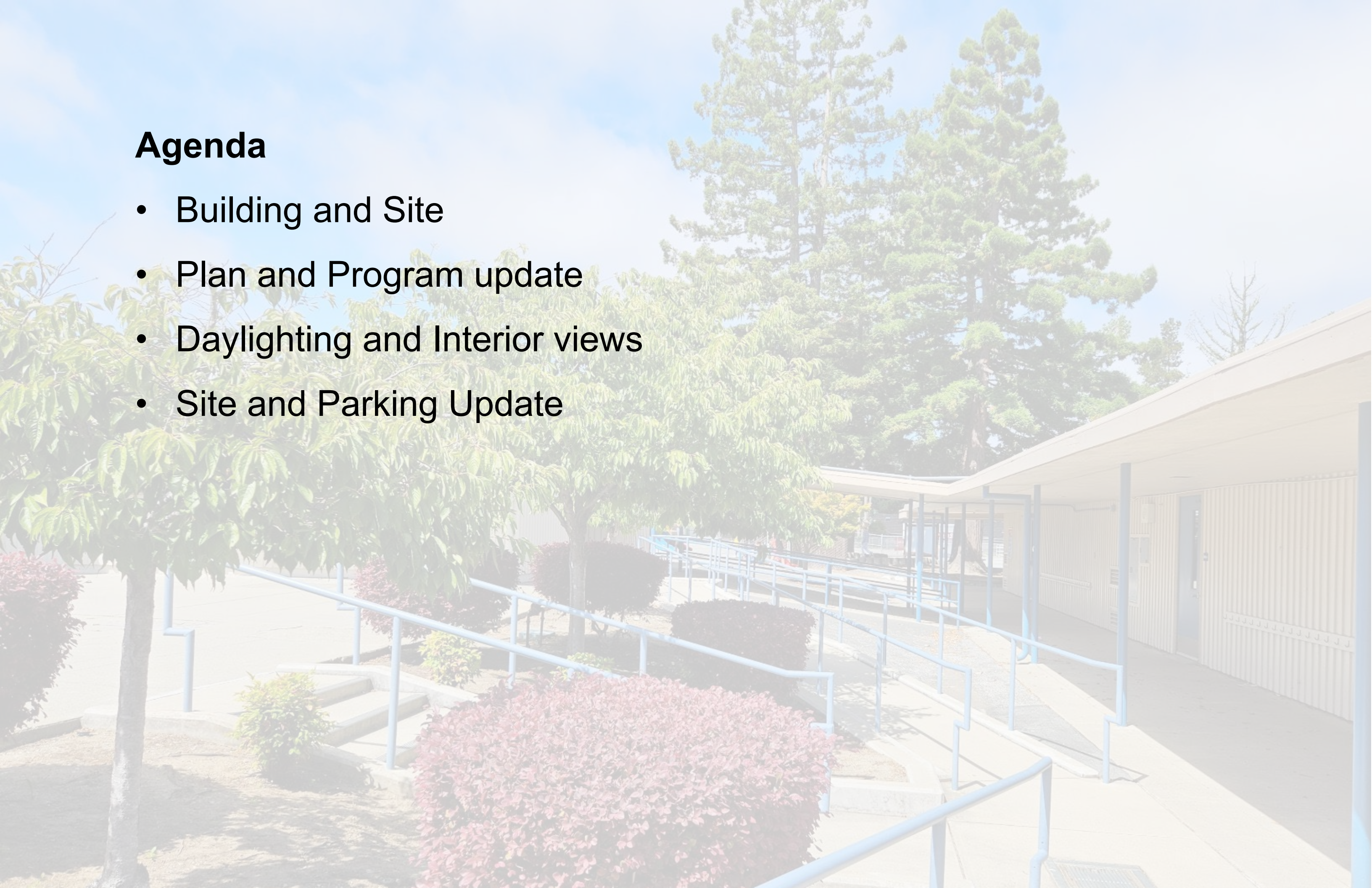
West Hillsborough Elementary School

Multi Purpose Room

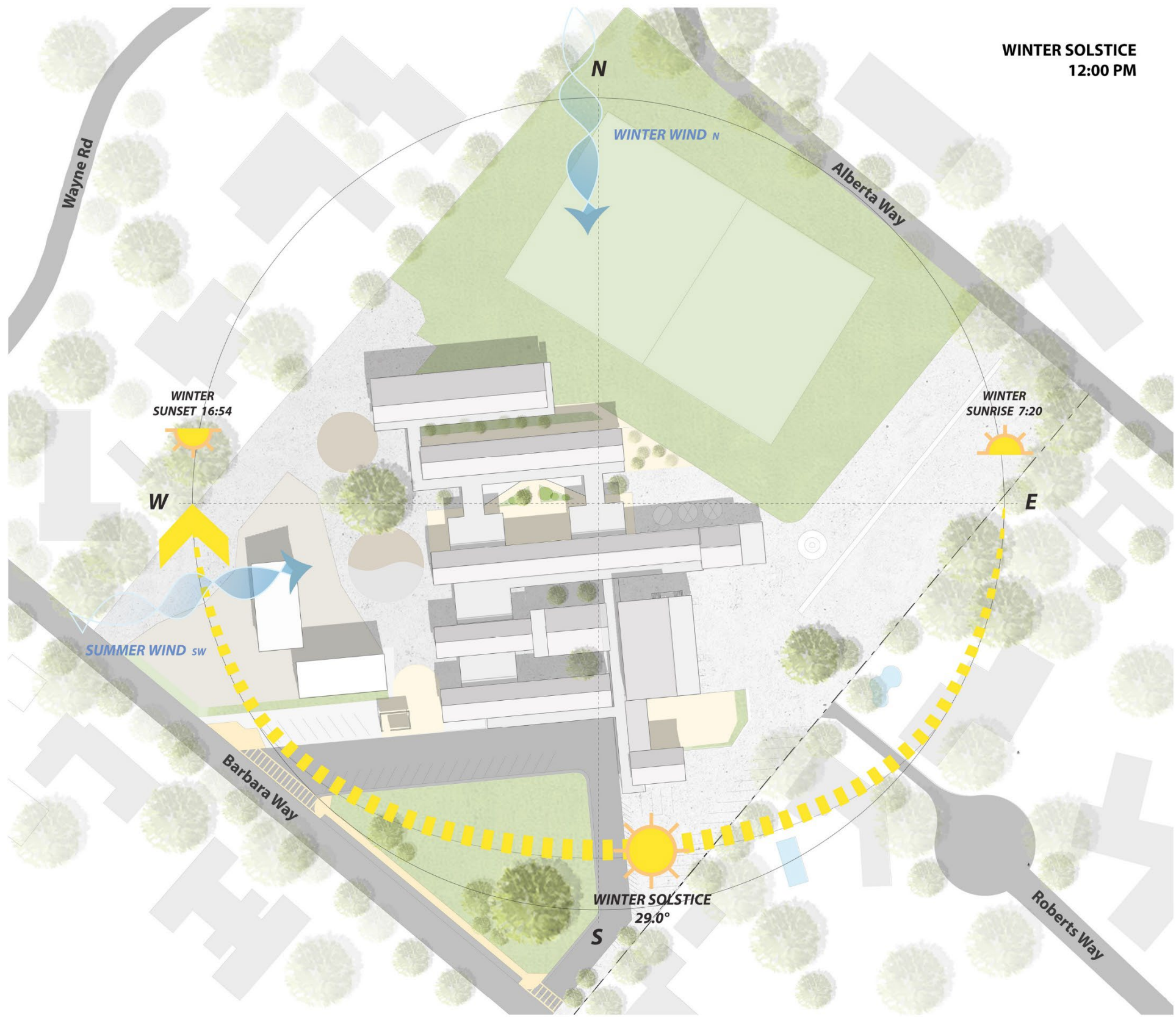
05.15.24

Agenda

- Building and Site
- Plan and Program update
- Daylighting and Interior views
- Site and Parking Update

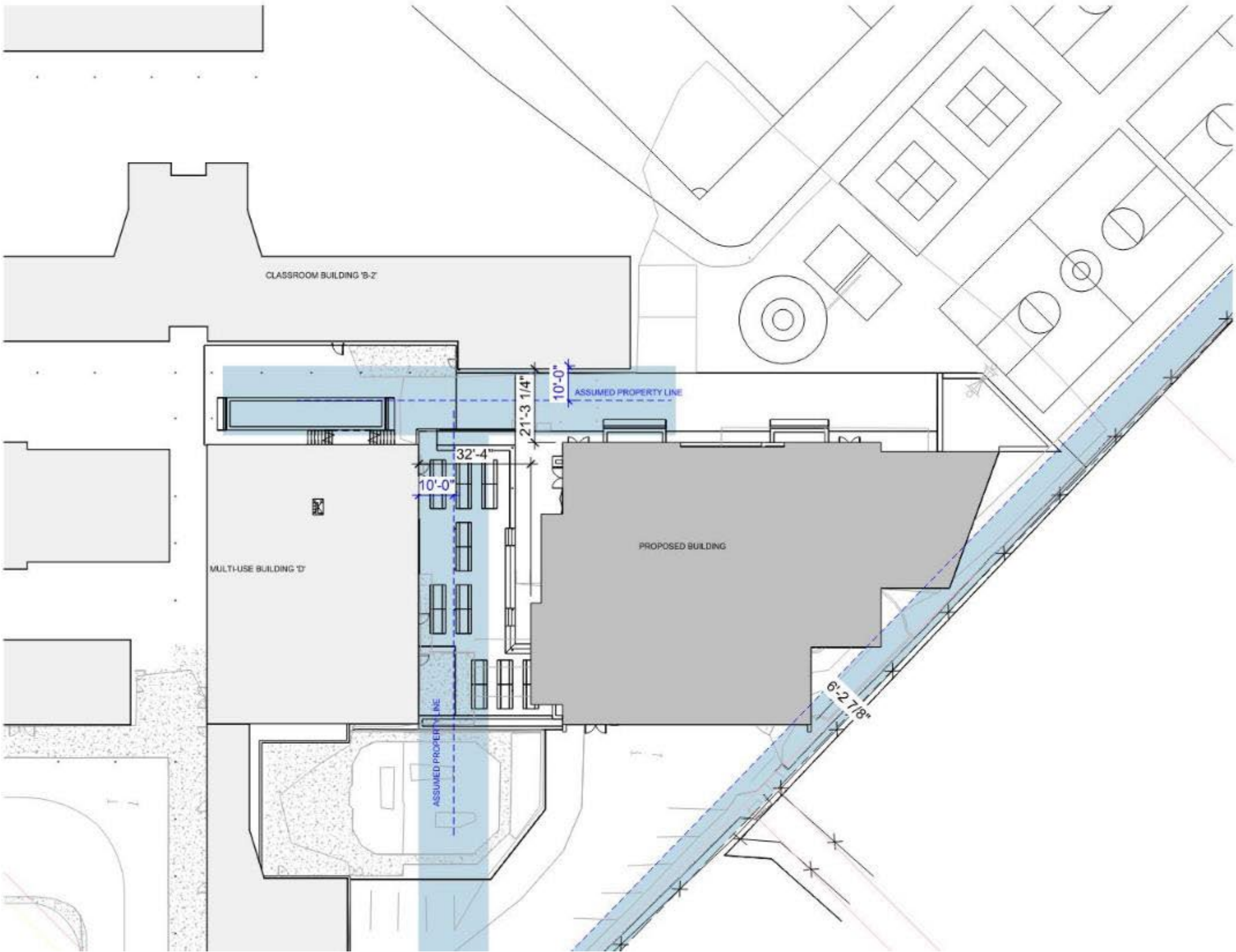


Site Plan





Site Constraints



Site Plan





Building and Site



Entry View





Butterfly Scheme



Butterfly Scheme



Butterfly Scheme





Butterfly Scheme



Butterfly Scheme

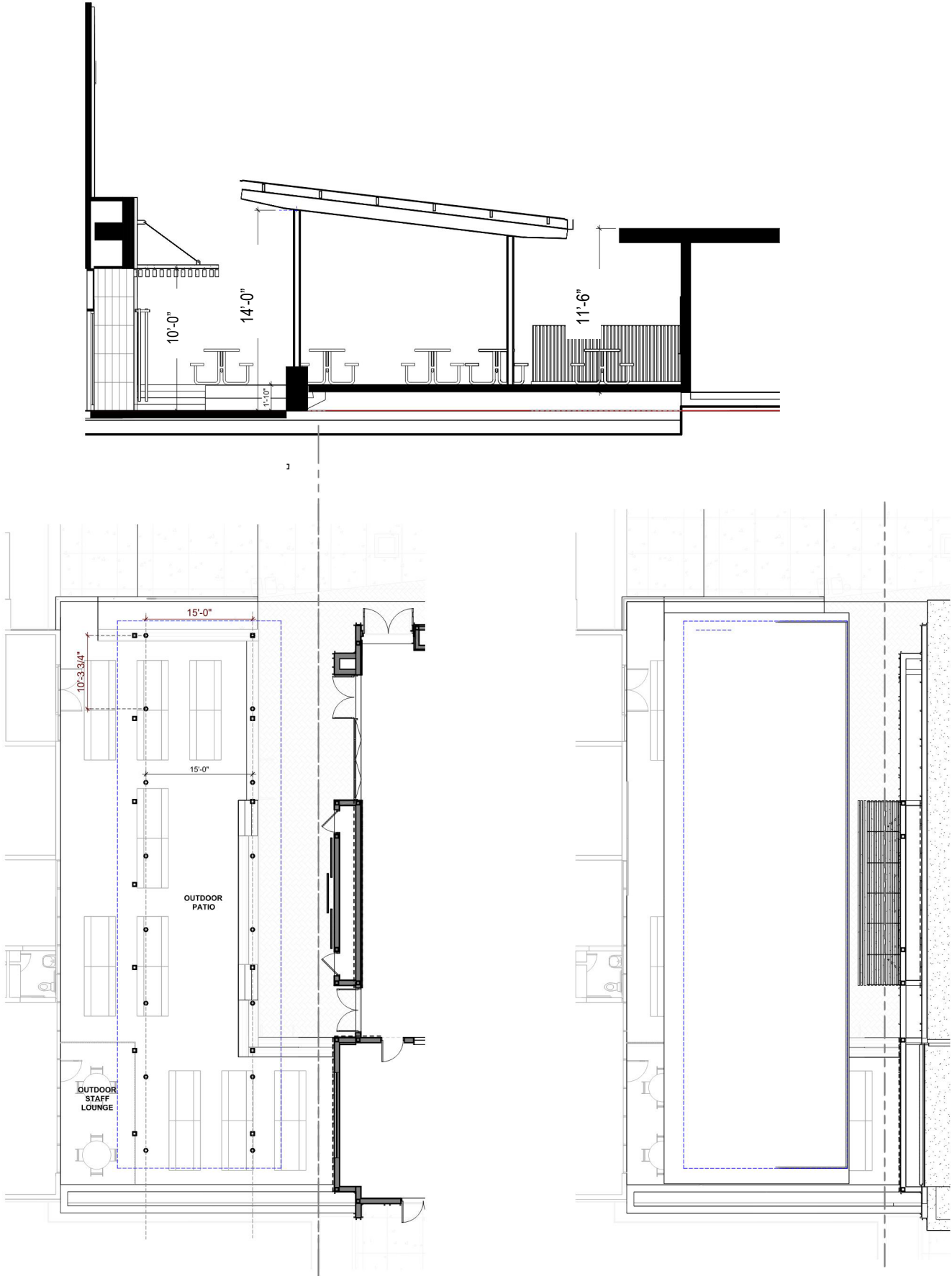




Butterfly Scheme with the canopy



Canopy Design



Butterfly



Board and Batten Hardie Plank



Green Wall



Board and Batten Hardie Plank



Accent Wall/Tile



Teaching Wall

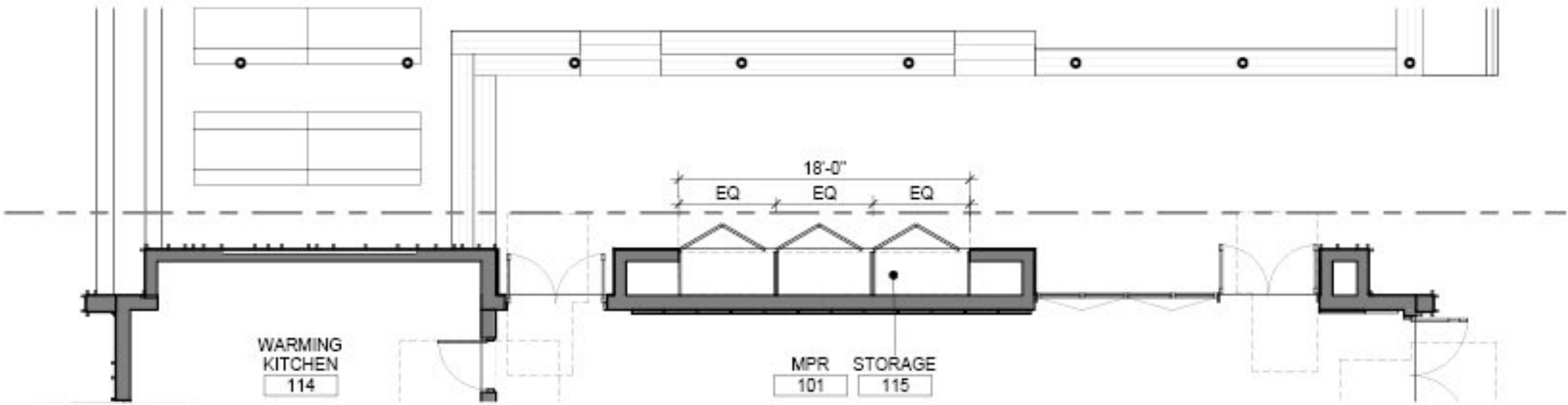
What we heard:

- Wall space for education
- Removable Gallery Wall Panels
- Flush Doors to access storage behind

Exterior Teaching Wall



West Elevation - With Boards

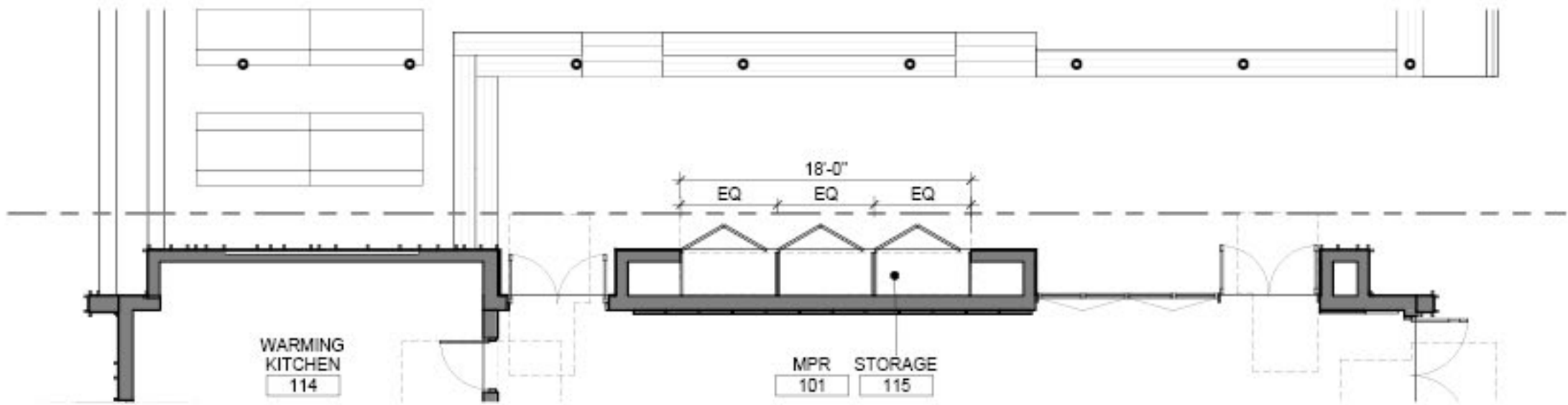


Plan

Exterior Teaching Wall



West Elevation - With Boards Removed

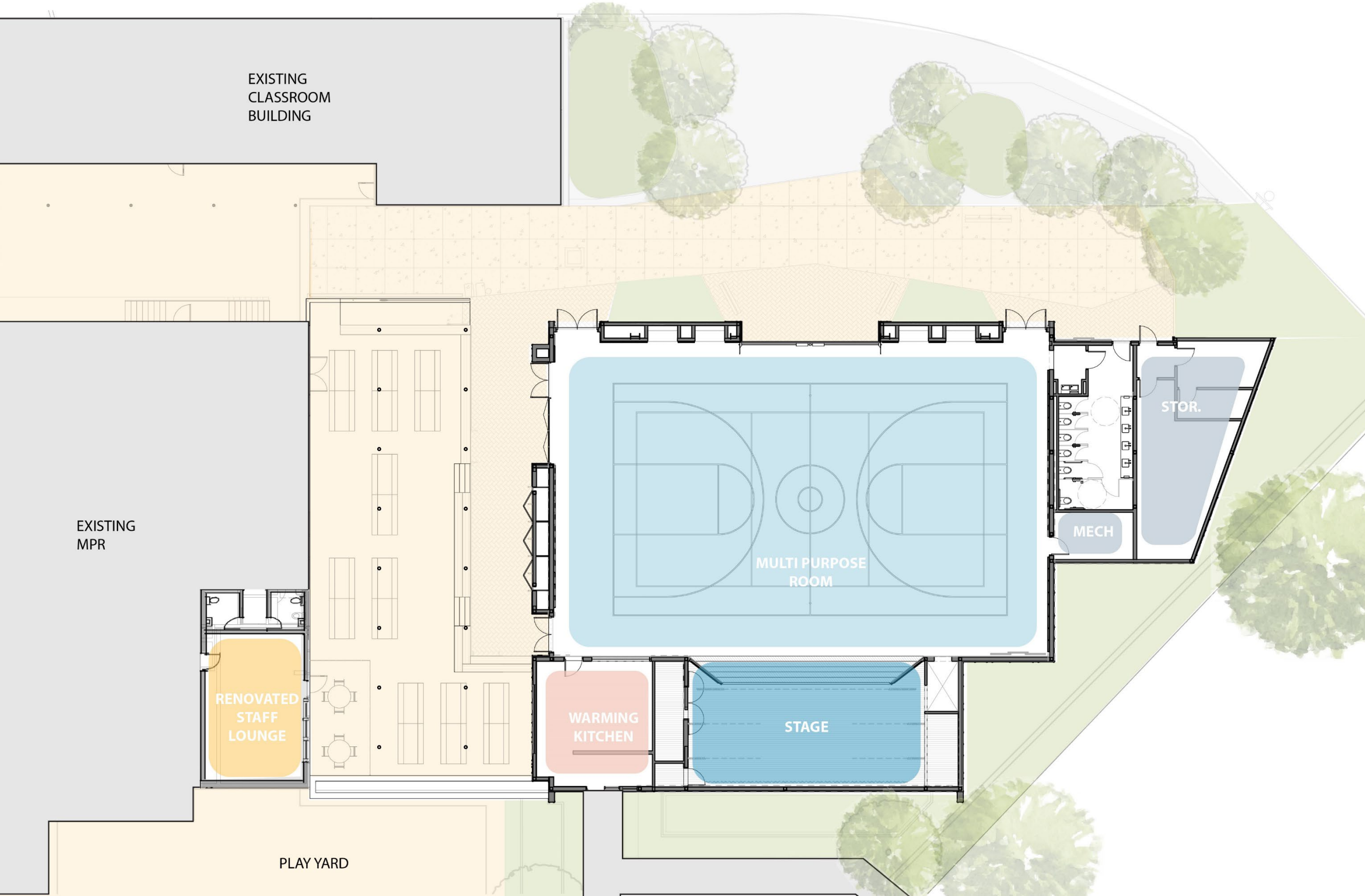


Plan



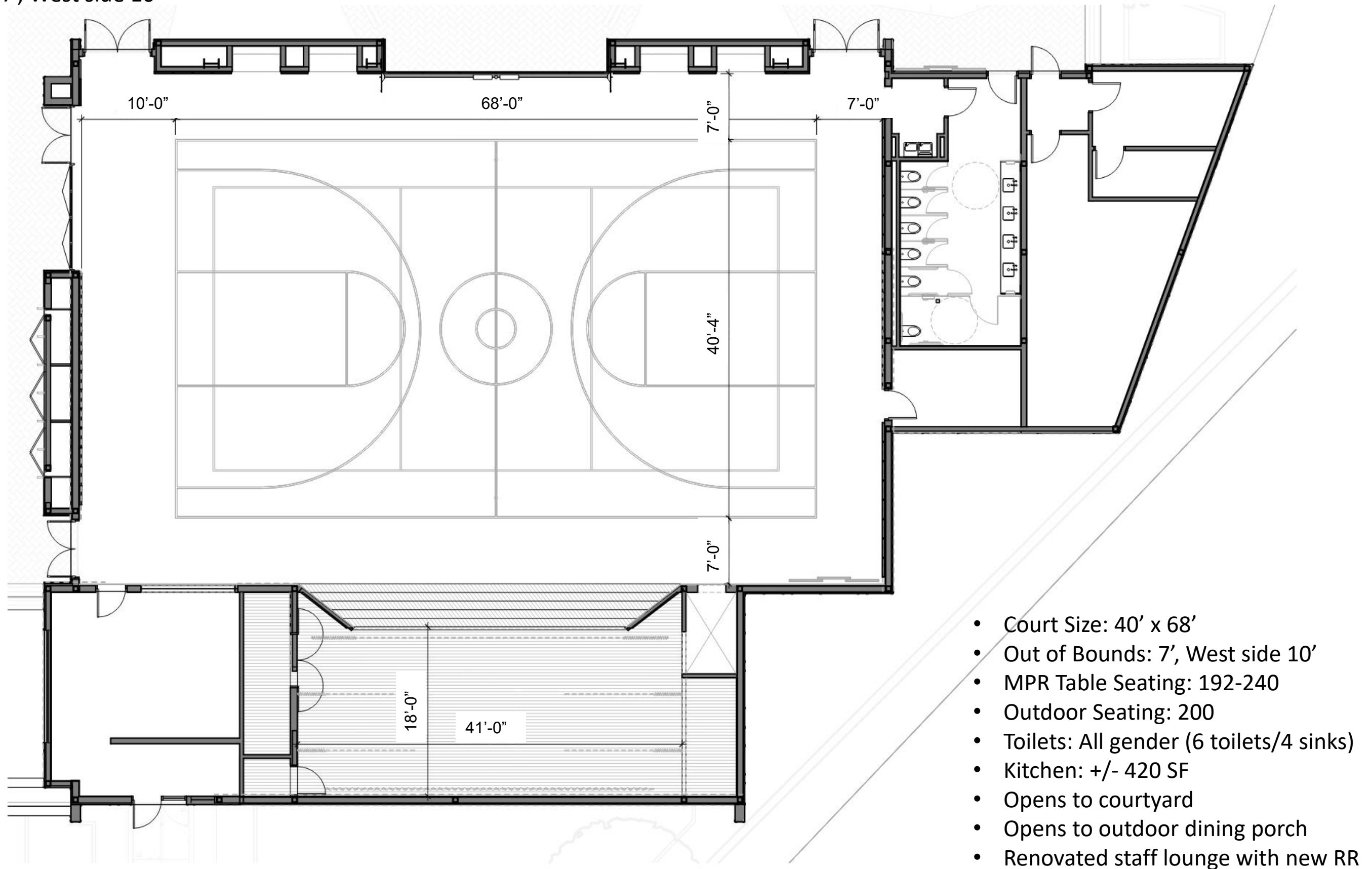
Plan Updates

Site Plan



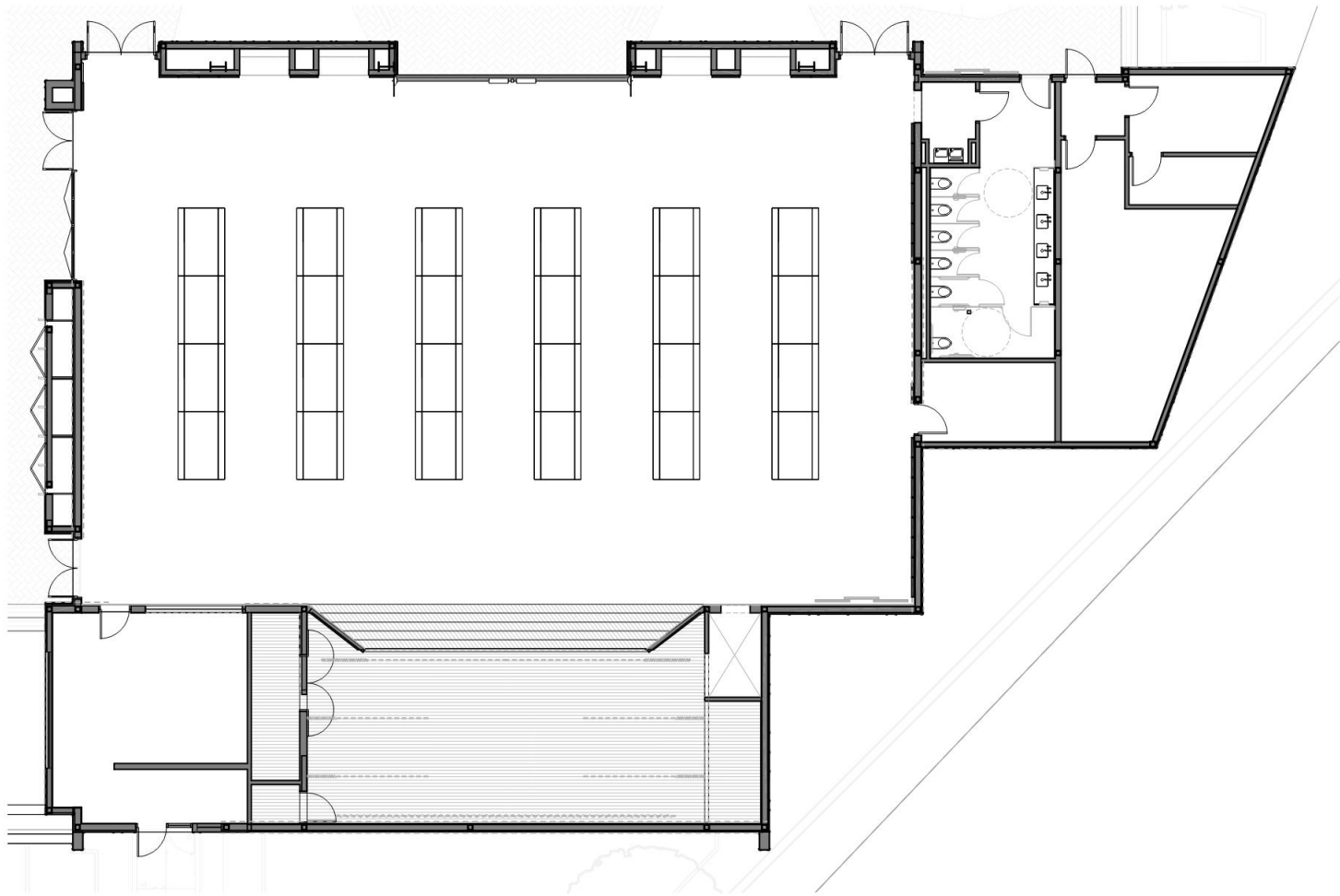
Court Layout

- Court Size: 40' x 68'
- Out of Bounds: 7', West side 10'
- (4) BB Hoops
- VB Sleeves



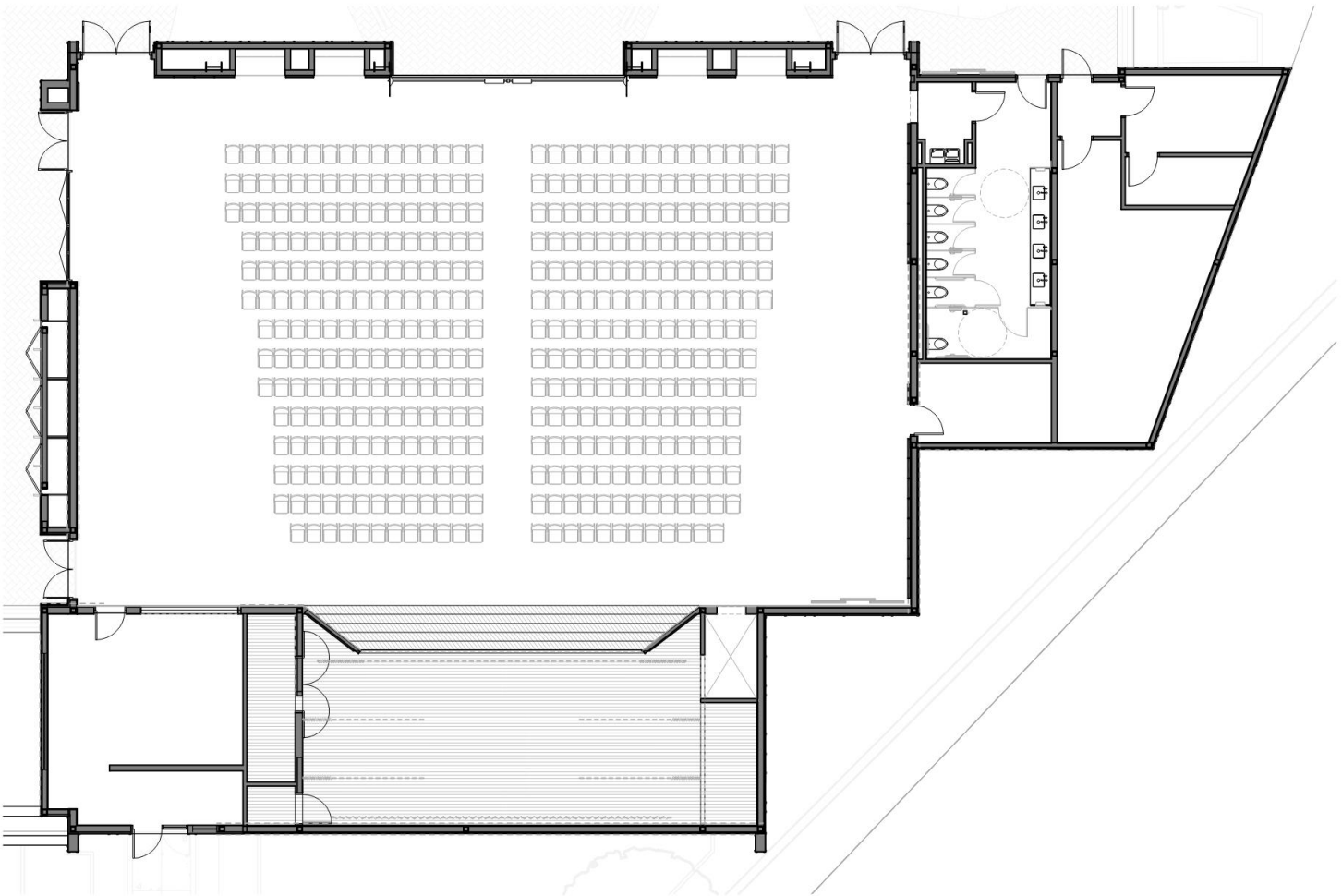
- Court Size: 40' x 68'
- Out of Bounds: 7', West side 10'
- MPR Table Seating: 192-240
- Outdoor Seating: 200
- Toilets: All gender (6 toilets/4 sinks)
- Kitchen: +/- 420 SF
- Opens to courtyard
- Opens to outdoor dining porch
- Renovated staff lounge with new RR

Seating Layout



Lunch: 192-240 seats

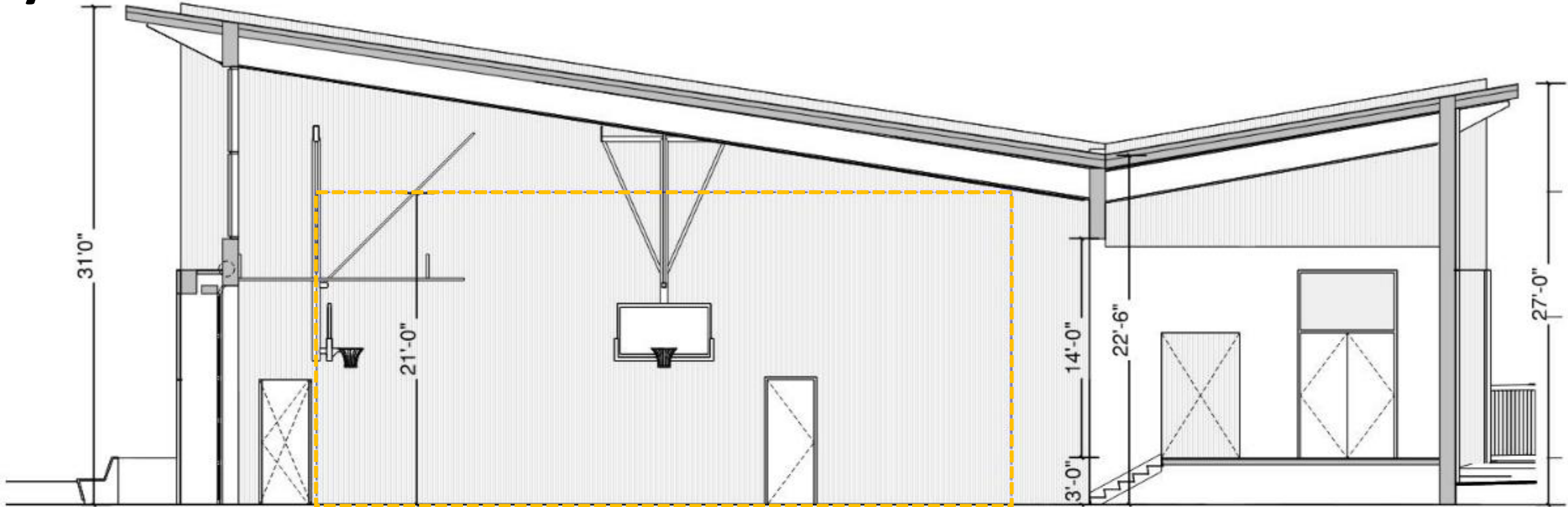
Triple table set per pocket/ 12 tables total.
(option to have quads in each pocket for capacity of 256-320)



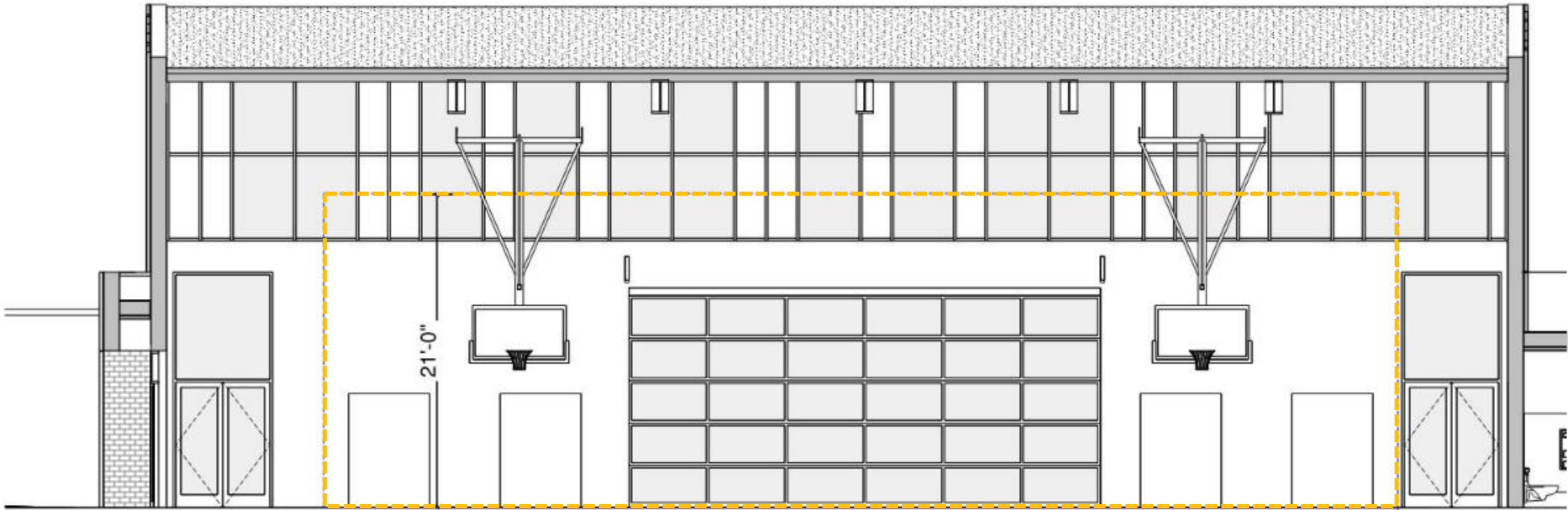
Performances: 398 seats

Preliminary layout. Sightlines to be confirmed with theater consultant.
Will need to review max occupancy and RR count with DSA

Butterfly Scheme

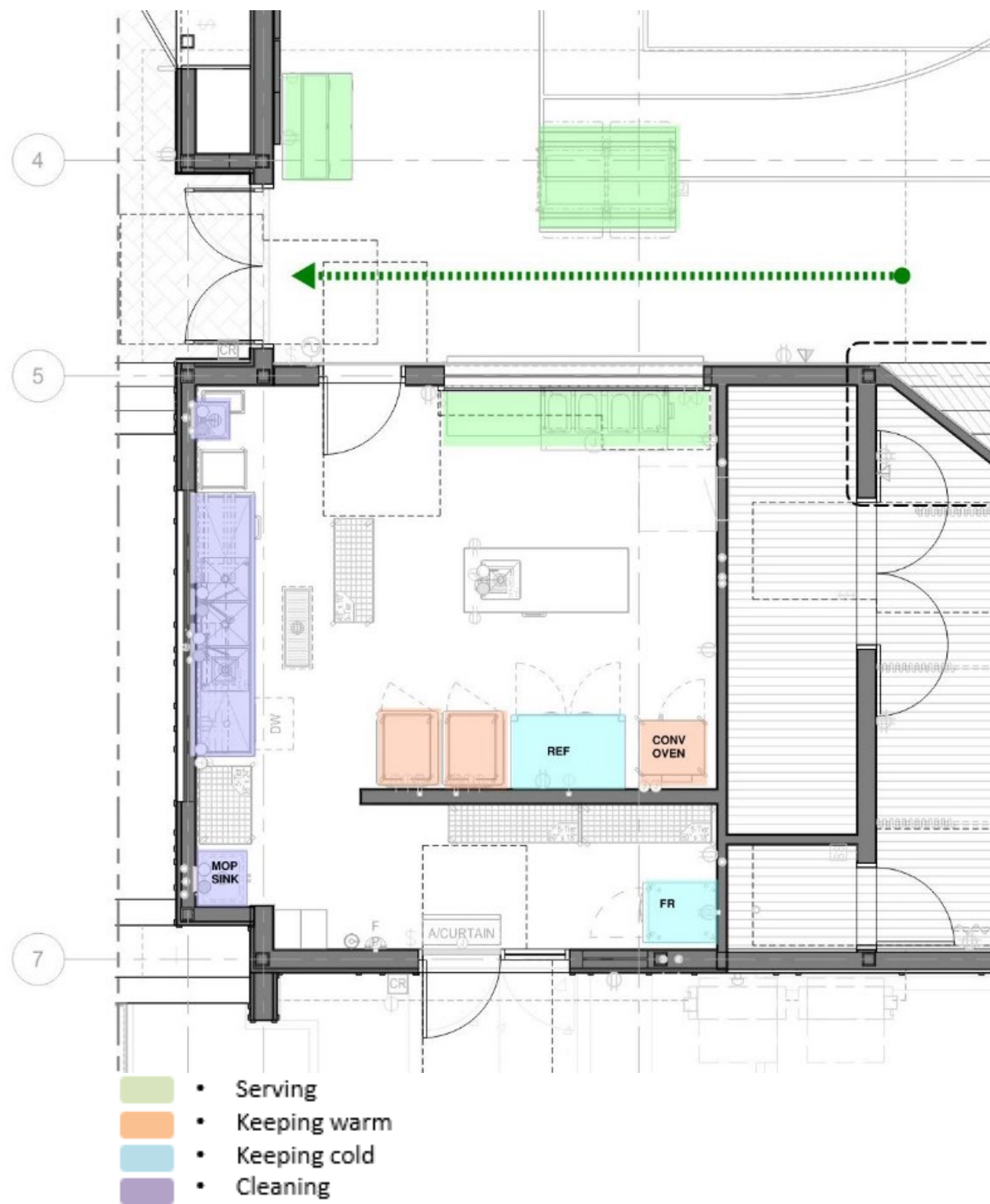


North/South Section

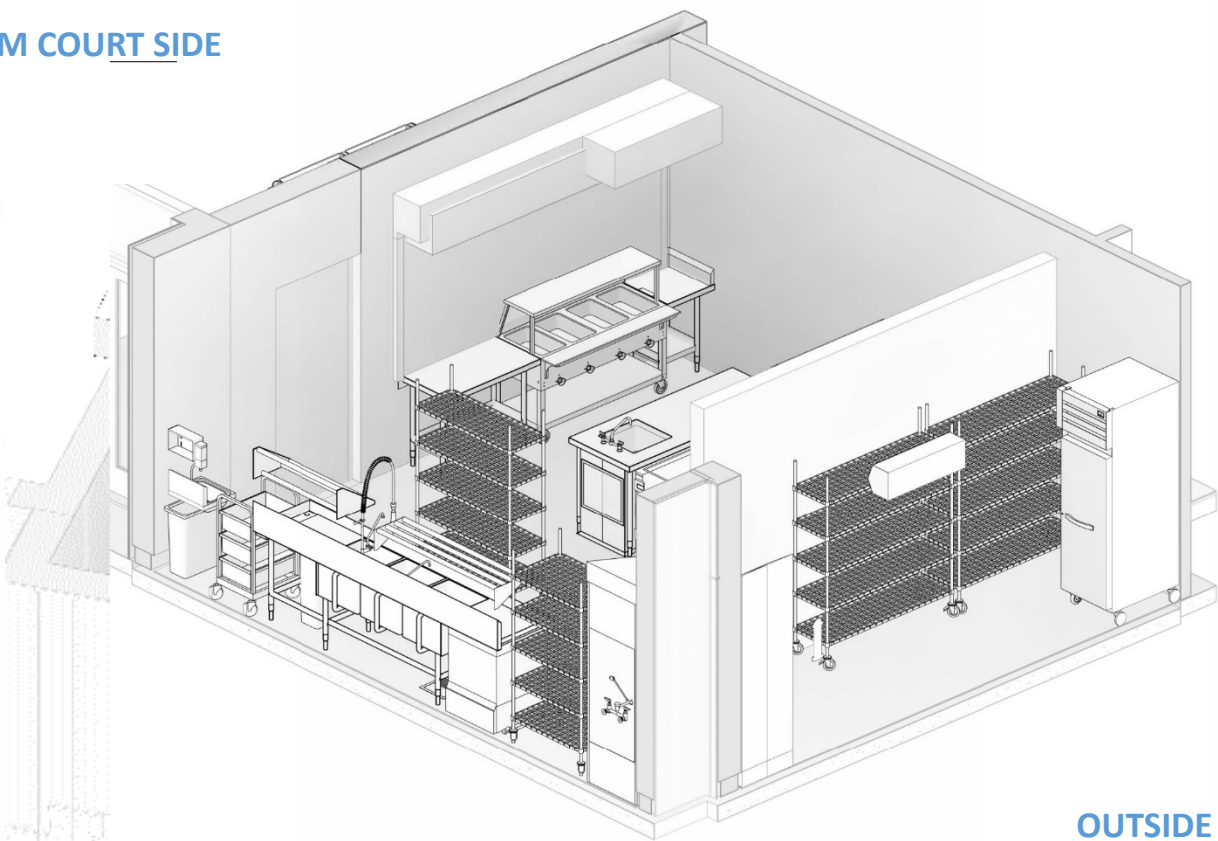


East/West Section

Kitchen Plan Layout



GYM COURT SIDE



OUTSIDE

- 4 door refrigerator (2) + single door freezer
- Sink included w/drying racks
- Hand sink 4 (1 ADA)
- Mop sink included
- Hot holding units 2
- Prep Table 1
- Milk cooler
- Salad Bar
- Hot dish up (for boxed meals and available for future)
- Dry storage **21 l.f.** (5 tier) included

A background image of a schoolyard with children playing. A group of children is in the foreground, some holding hands in a circle. In the background, a single-story school building with blue doors and windows is visible under a clear blue sky.

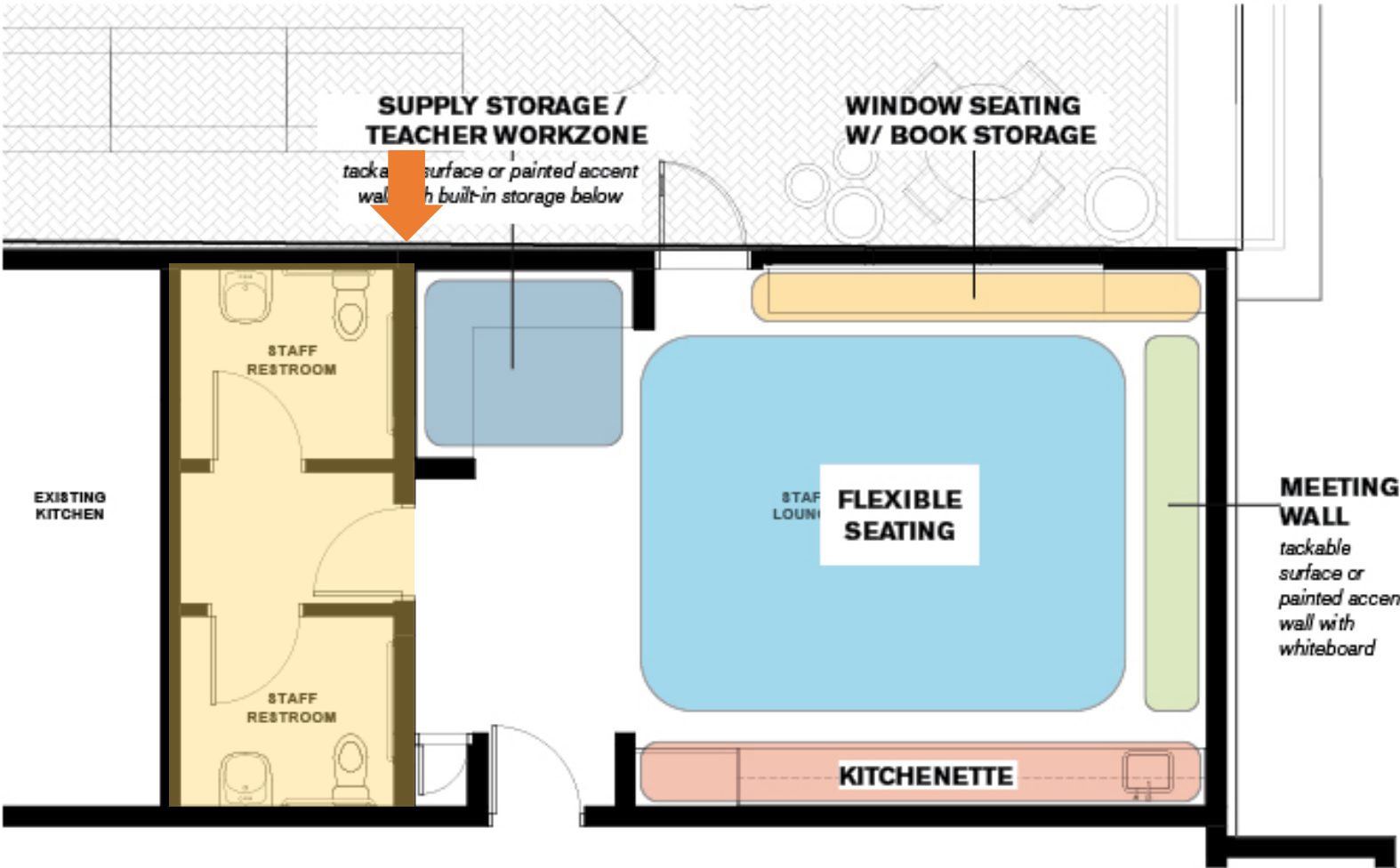
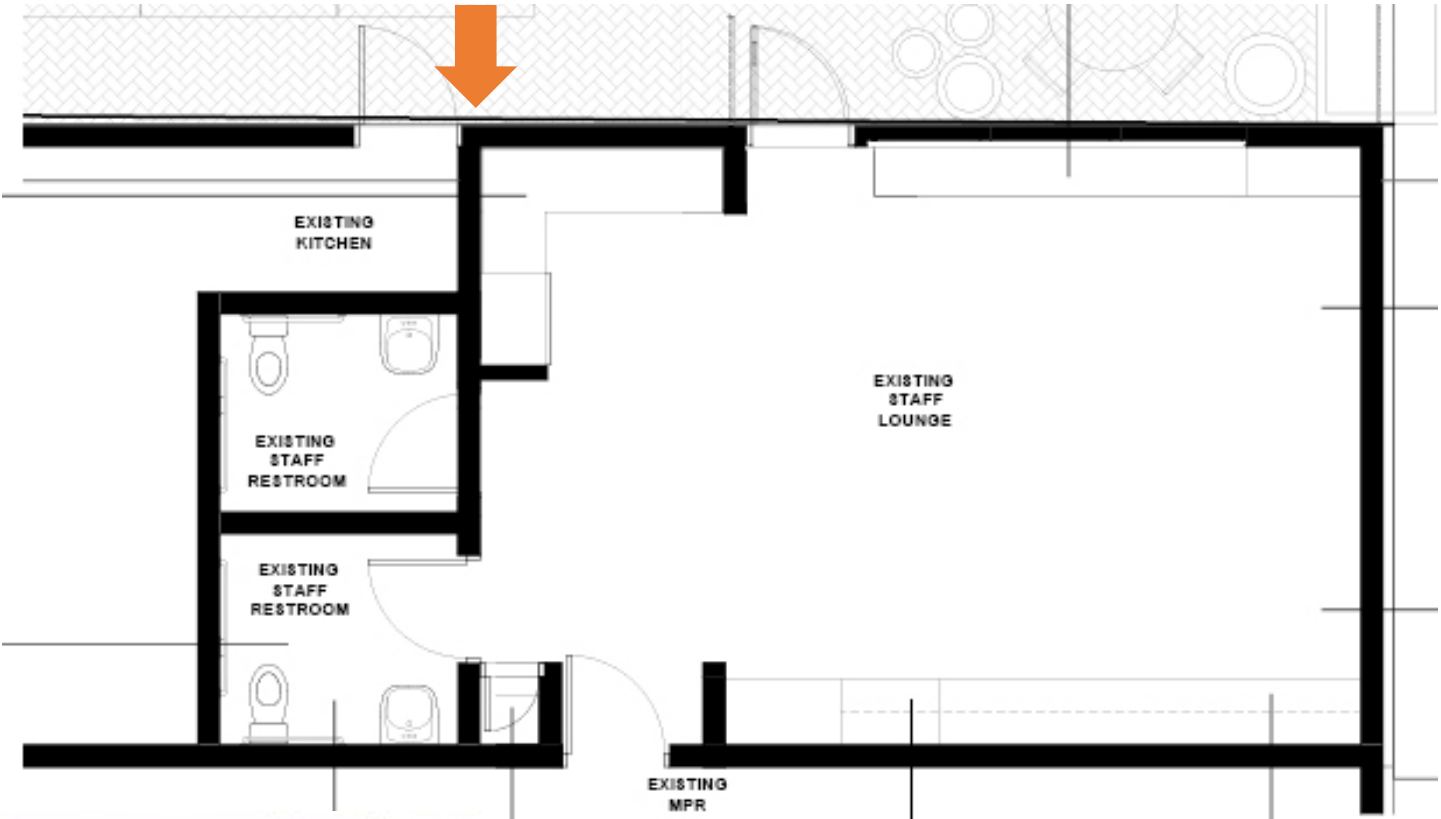
Teachers Lounge

What we heard:

- Casework and flooring are in good shape
- Work to improve minor work area
- Move the laminator into another space to improve lounge area for staff - privacy
- Updated toilet rooms

Staff Lounge

Existing and Proposed side by side





Interior : Daylighting and views

Daylight Levels

w/ Solar Tubes

Daylight Autonomy: 94%

- 94% of floor area meets autonomous daylight levels at least half of the year

Annual Sunlight Exposure: 0%

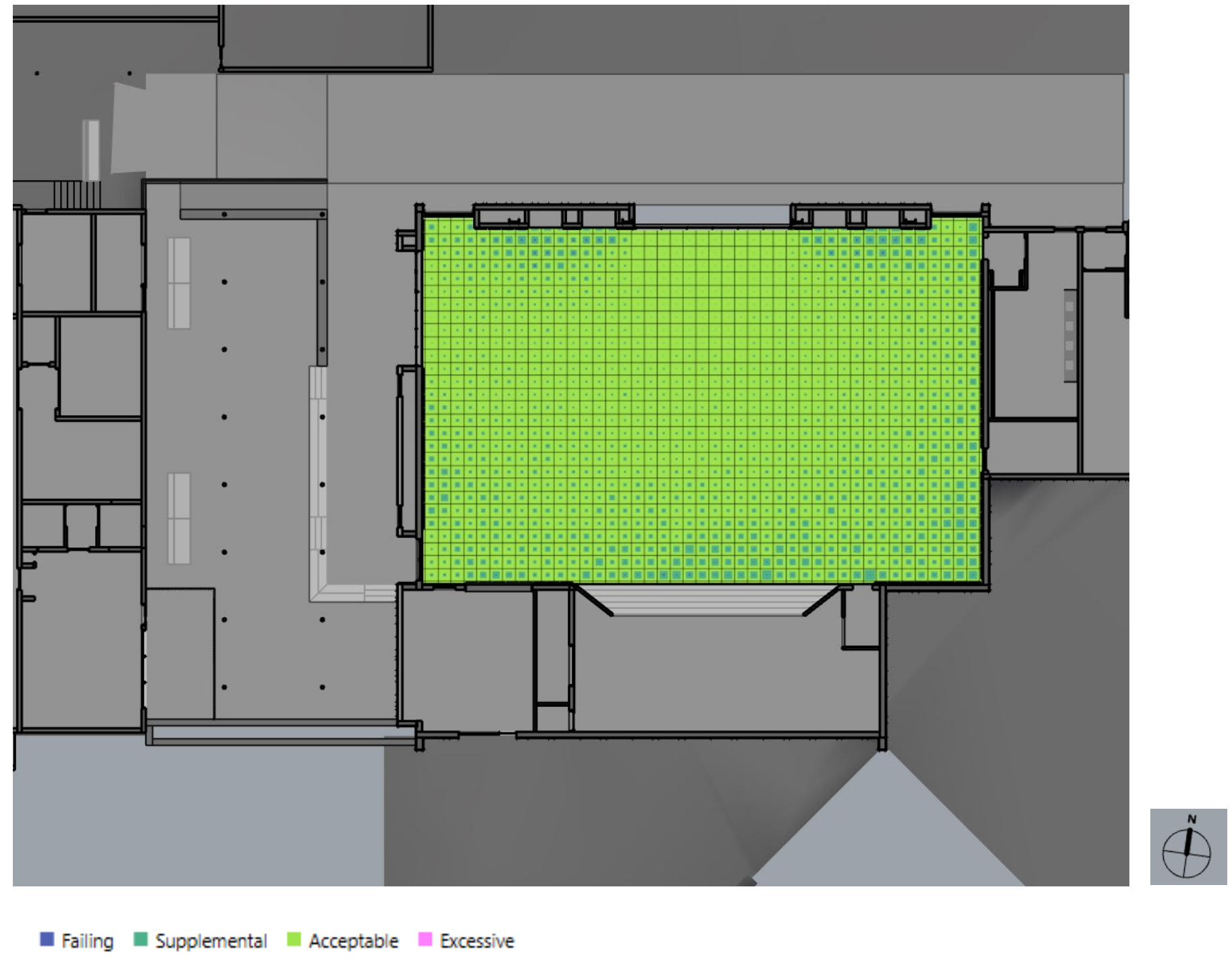
- None of the floor has glare for more than 250 hours during the year

Useful Daylight Illuminance: 73%

- The gym meets *autonomous* daylight levels 73% of the year.
- There is no useful daylight only 6% of the year.

Average Lux: 513

- Benchmark for daylight sufficiency is 300.



Daylight Levels

w/o Solar Tubes

Daylight Autonomy: 86%

- 86% of floor area meets autonomous daylight levels at least half of the year

Annual Sunlight Exposure: 0%

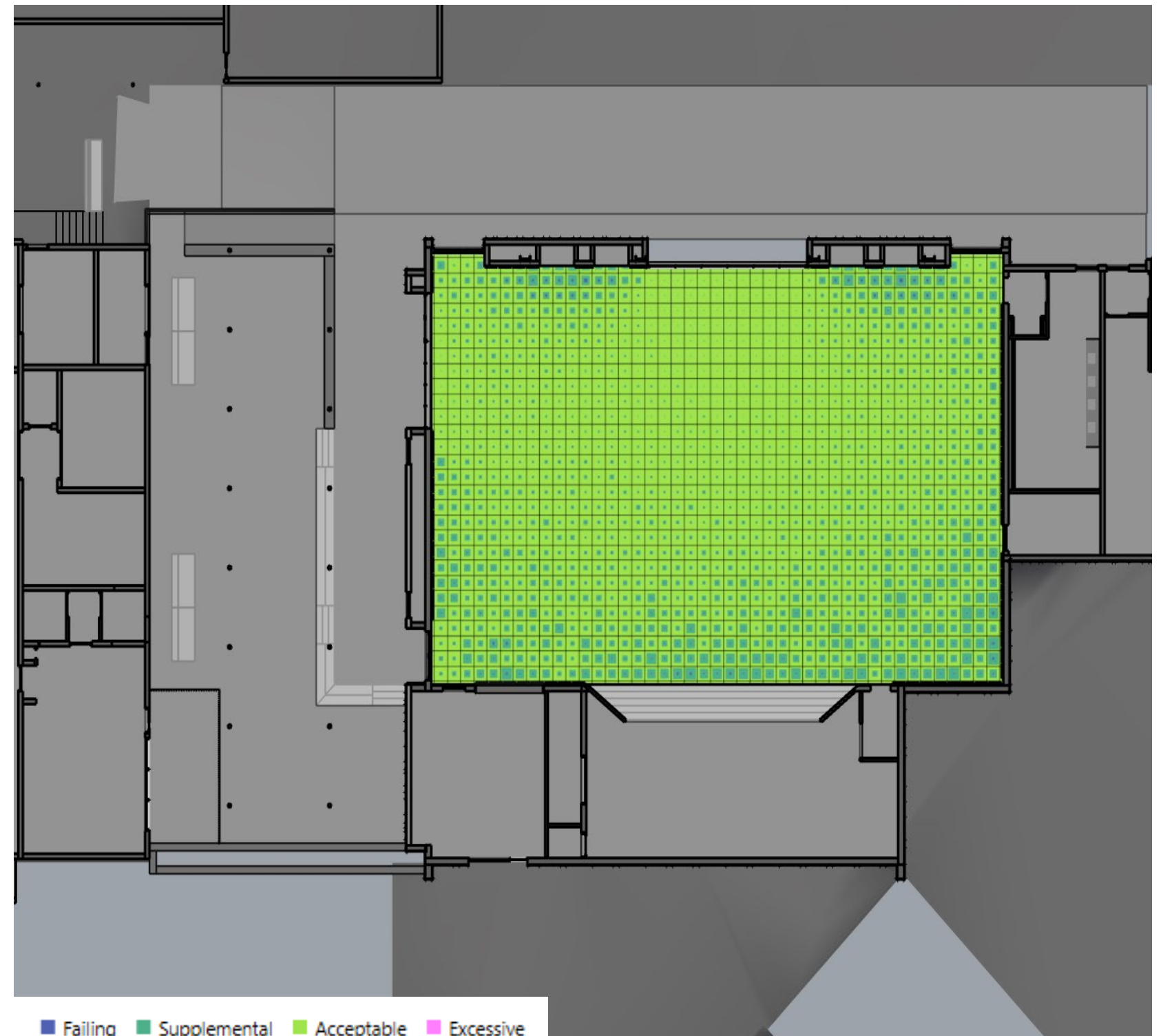
- None of the floor has glare for more than 250 hours during the year

Useful Daylight Illuminance: 69%

- The gym meets *autonomous* daylight levels 69% of the year.
- There is no useful daylight only 6% of the year.

Average Lux: 499

- Benchmark for daylight sufficiency is 300.

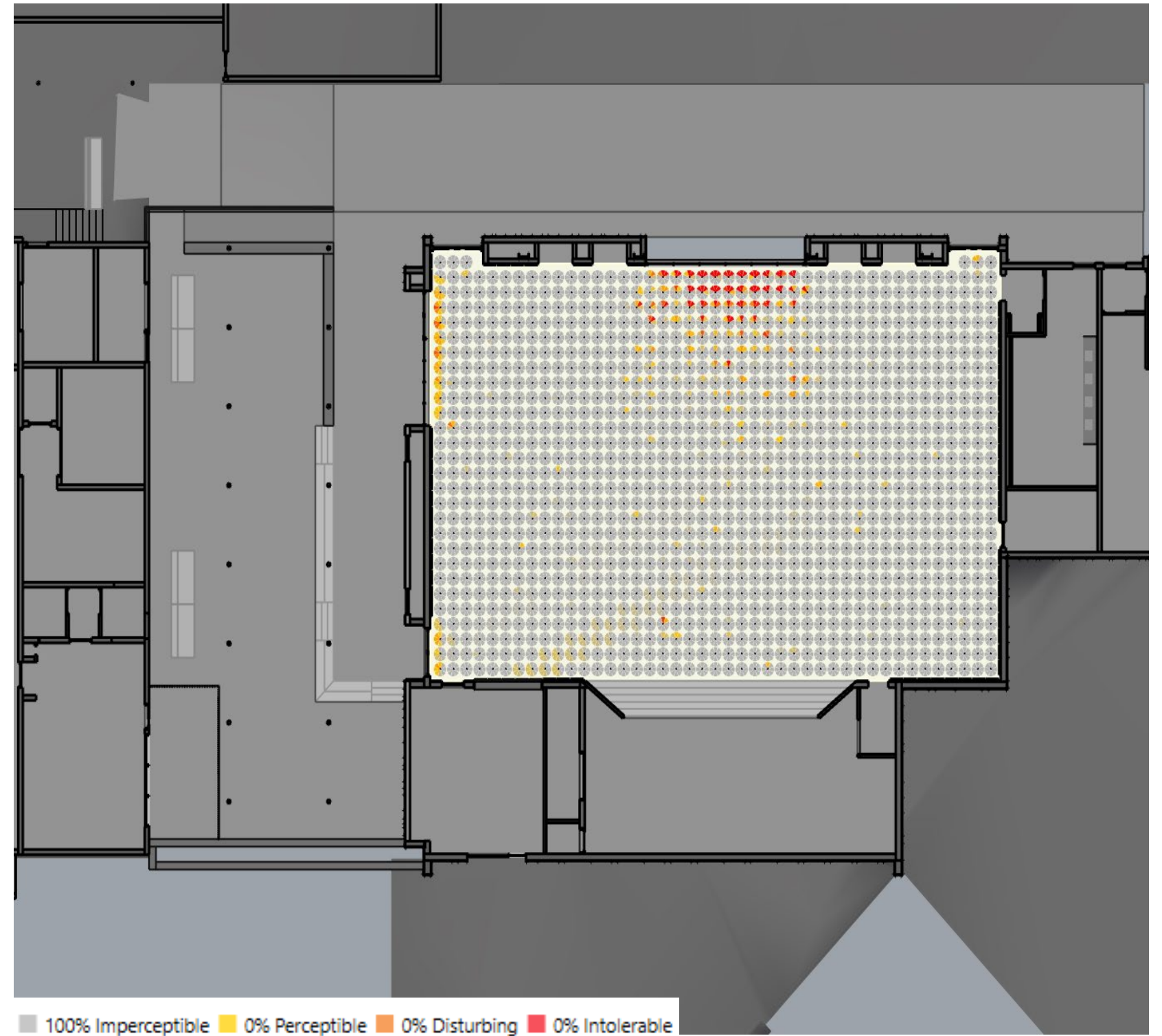


Glare

w/ Solar Tubes

Daylight Glare Probability: 1%

- 1% of total view angles have concerning levels of glare more than 5% of the year

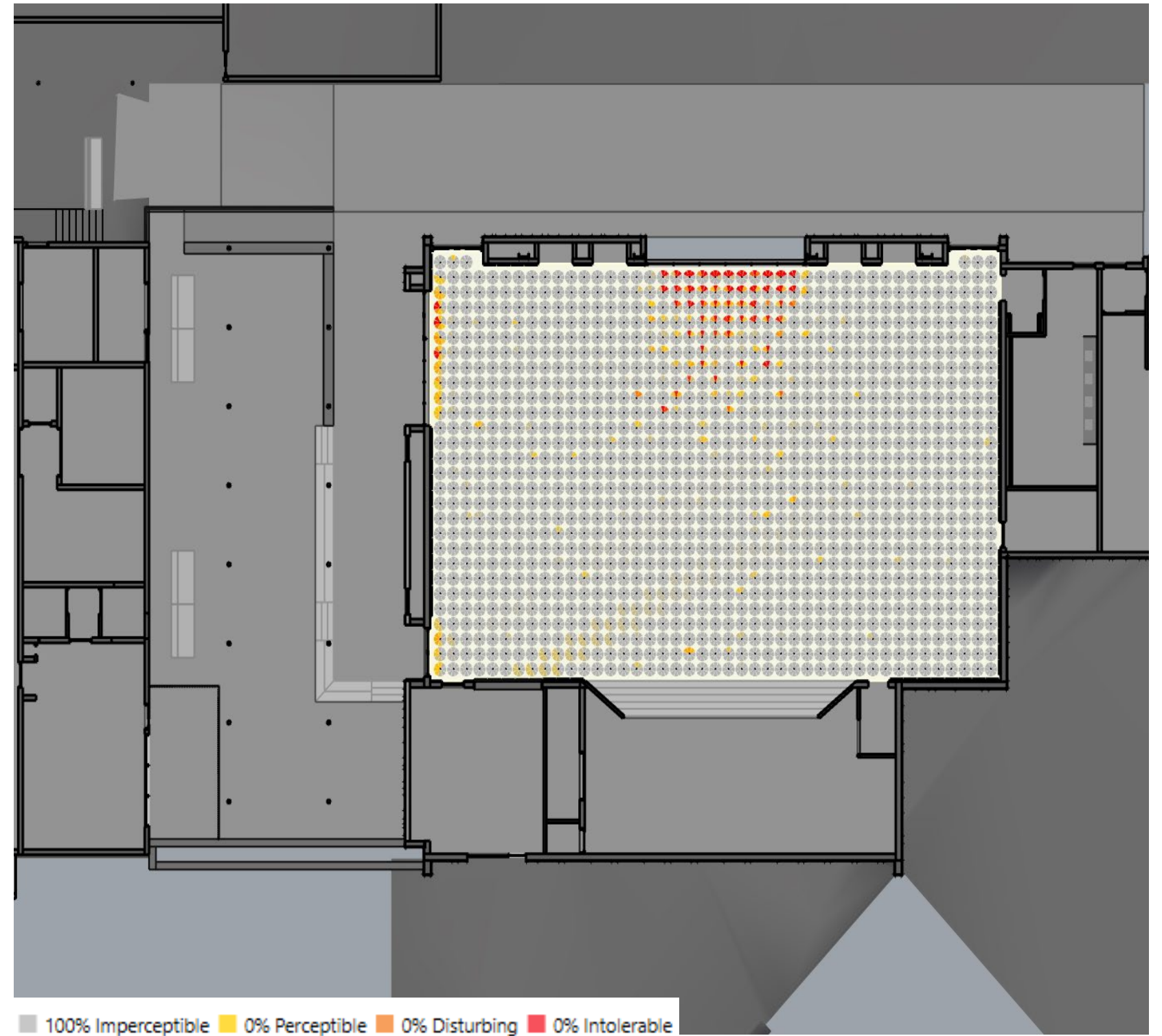


Glare

w/o Solar Tubes

Daylight Glare Probability: 1%

- 1% of total view angles have concerning levels of glare more than 5% of the year



Glare Study

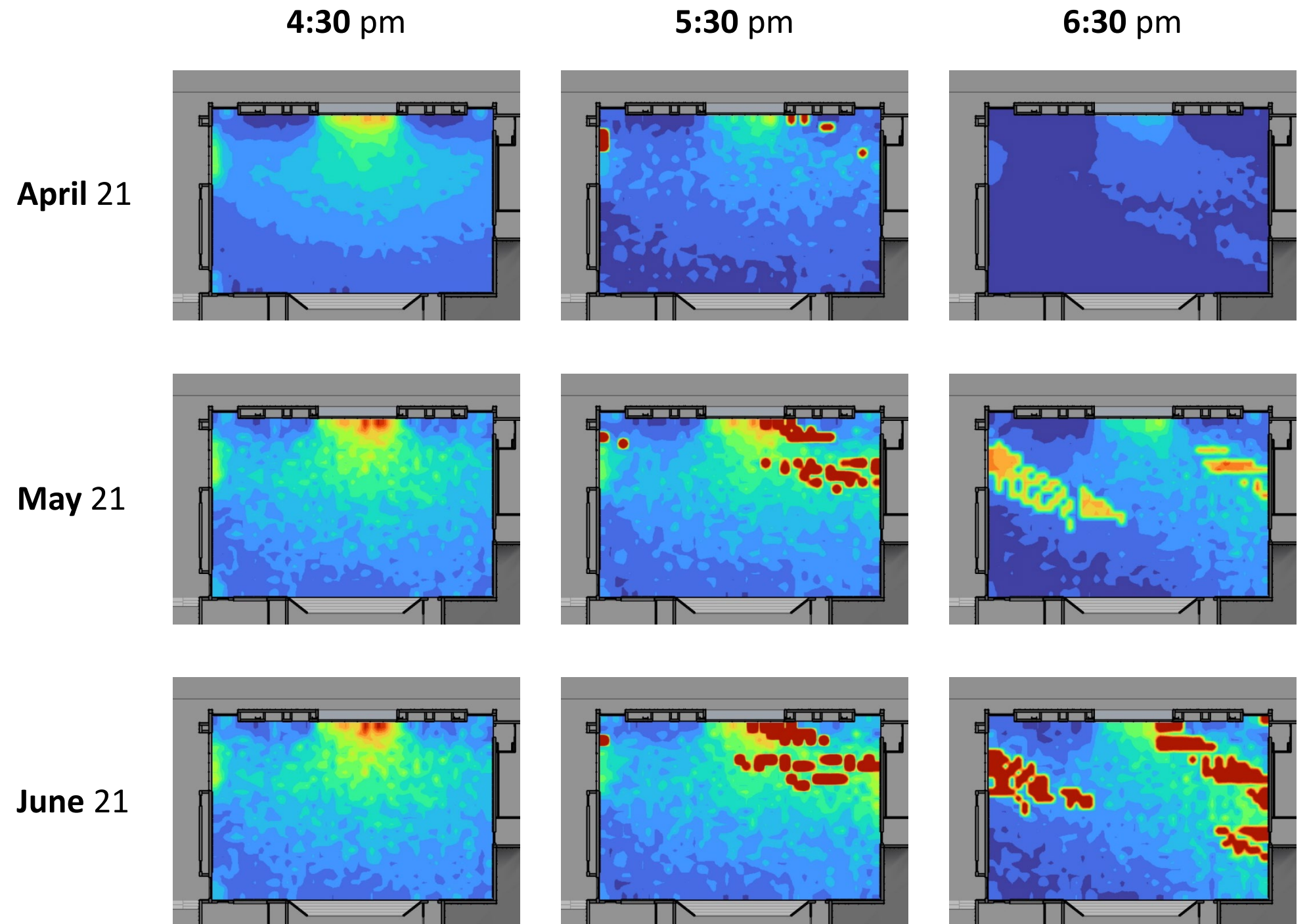
Late afternoon & evening
(spring, summer)

The north-facing clerestory glazing, and floor-level sliders & garage door provide excellent daylight for the vast majority of the year.

There will likely be glare on the court in the **evening hours (from approximately 5pm to sunset)** beginning in **mid-April** and **ending in mid-August**.

Glare zones are shown in dark red

Glare will come from the clerestory windows as well as the floor-level glazing.



Glare Study

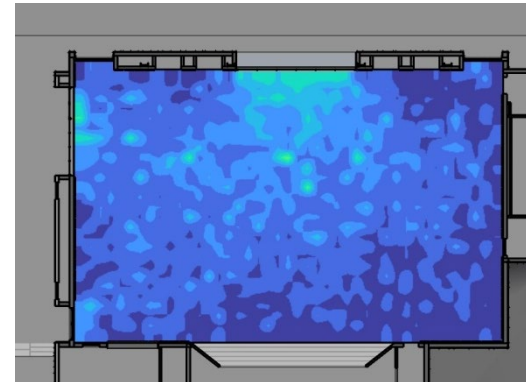
Late afternoon (winter)

The north-facing clerestory glazing and floor-level sliders & garage door provide excellent daylight for the vast majority of the year.

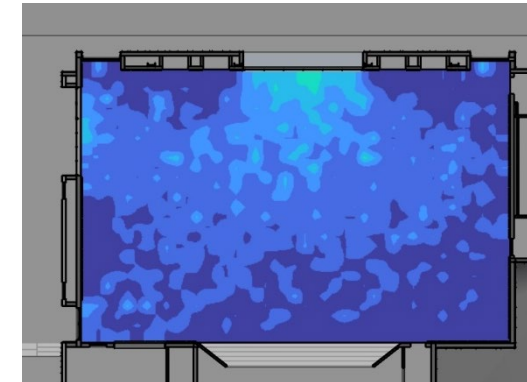
The **likelihood of afternoon and evening glare in winter is very small due**. Primarily, the sun will not be coming in directly through the northern clerestory. Additionally, the adjacent buildings provide shade when the sun is lowest in the sky.

Oct 21
and Feb 21

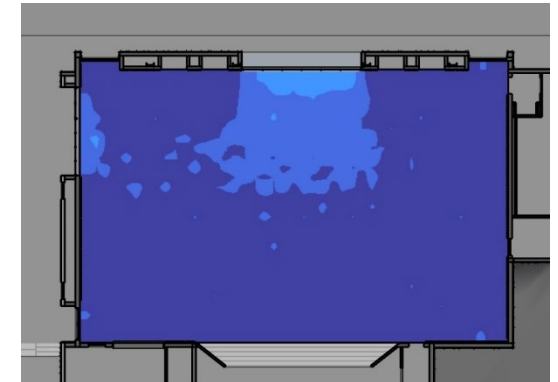
2:30 pm



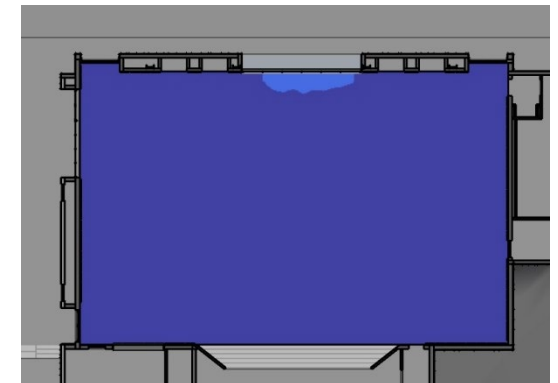
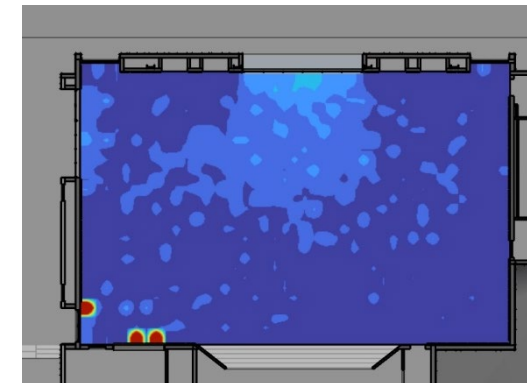
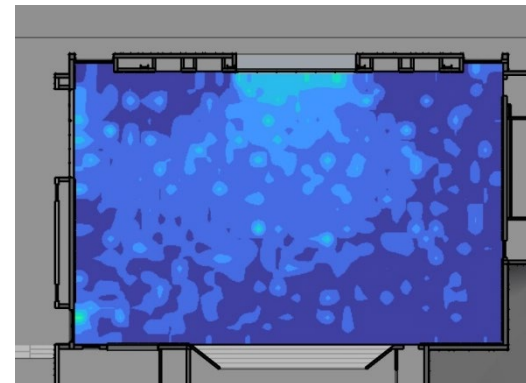
3:30 pm



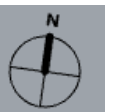
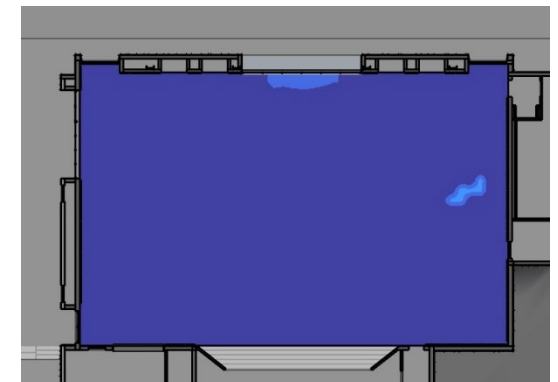
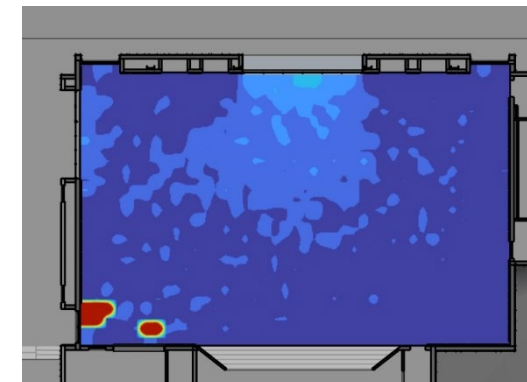
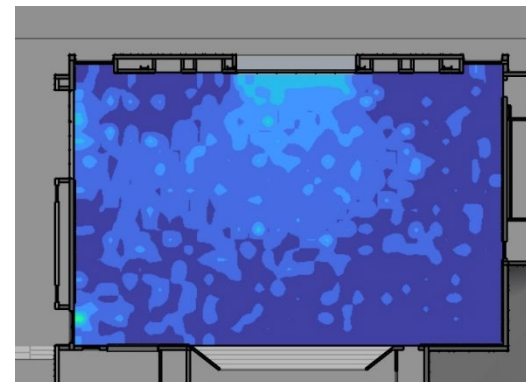
4:30 pm



Nov 21
and Jan 21



Dec 21



Glare Study

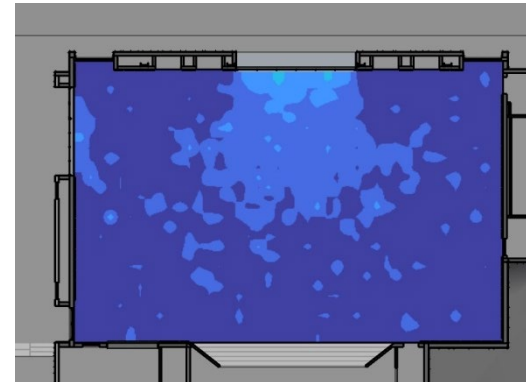
School day (overview)

The north-facing clerestory glazing and floor-level sliders & garage door provide excellent daylight for the vast majority of the year.

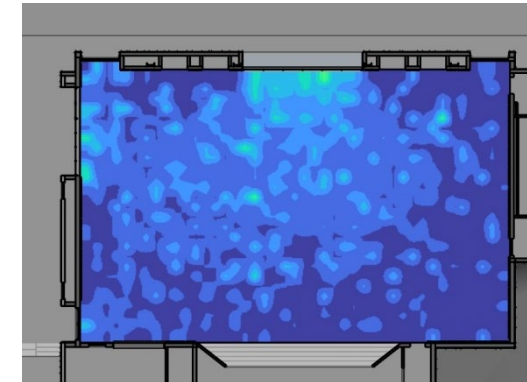
During the school day, the area near the garage door will be brightest area, but it is unlikely that this area will be a 'hot spot' for glare.

Dec 21

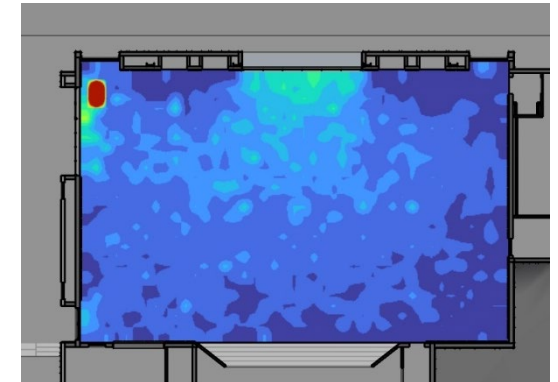
9:30 am



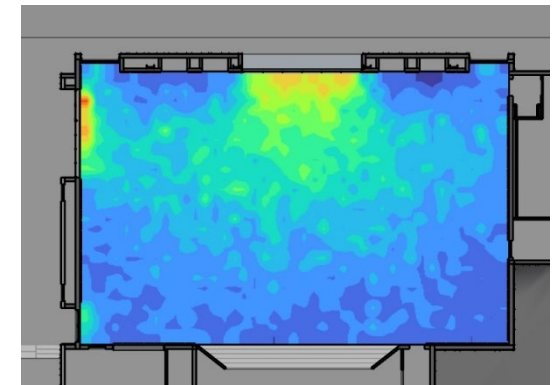
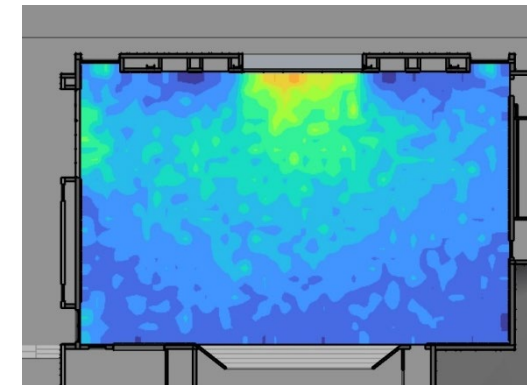
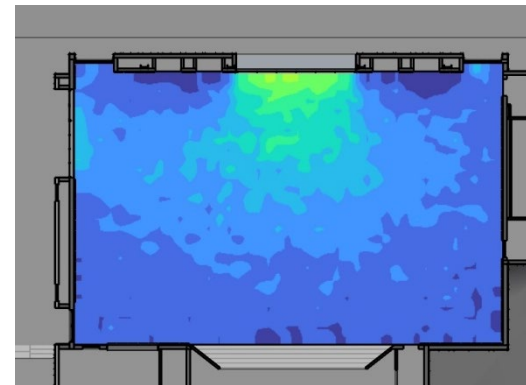
11:30 am



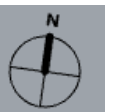
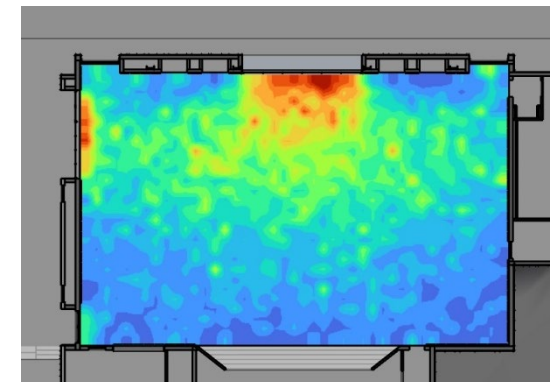
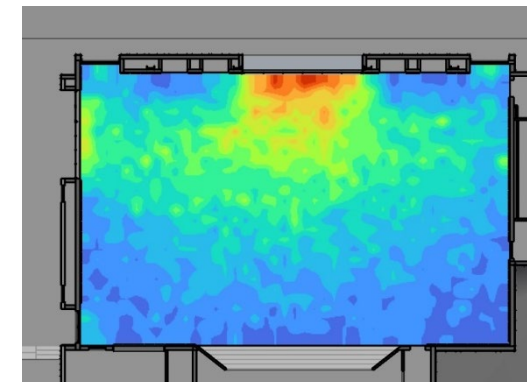
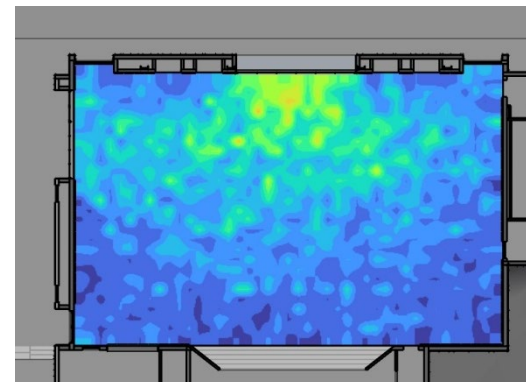
1:30 pm



Mar 21
and Sep 21



Jun 21



Interior View toward the Fields



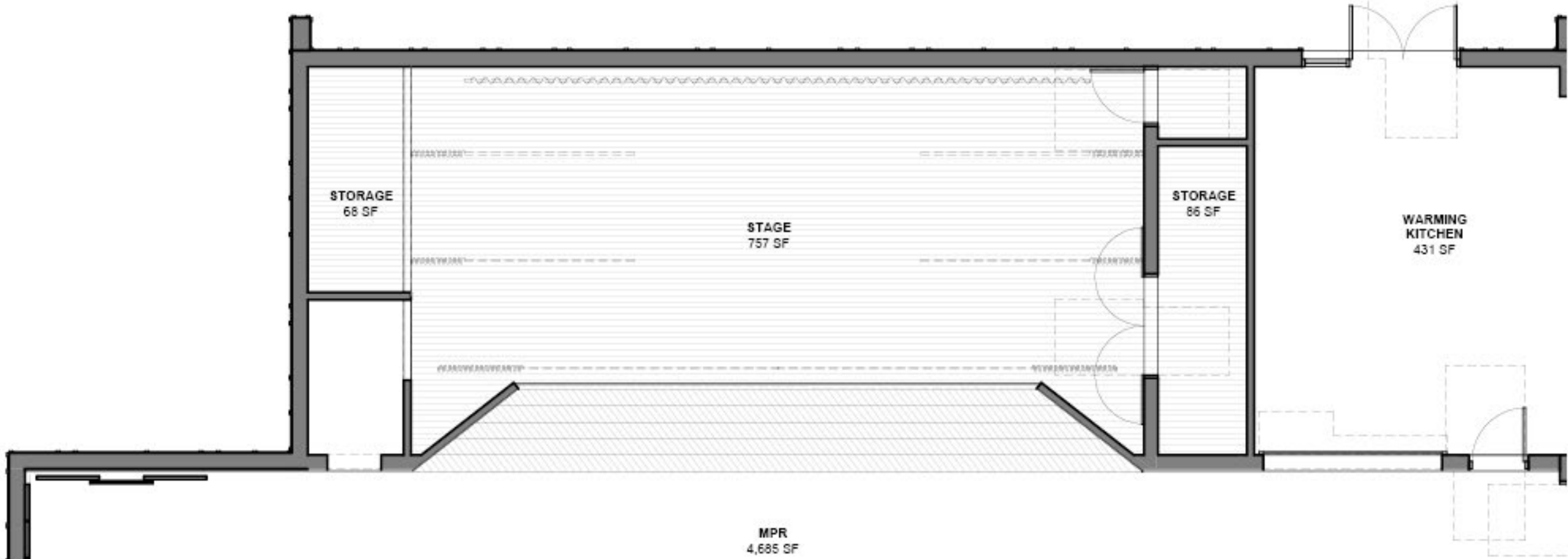
Interior View toward the Stage



Stage Wall

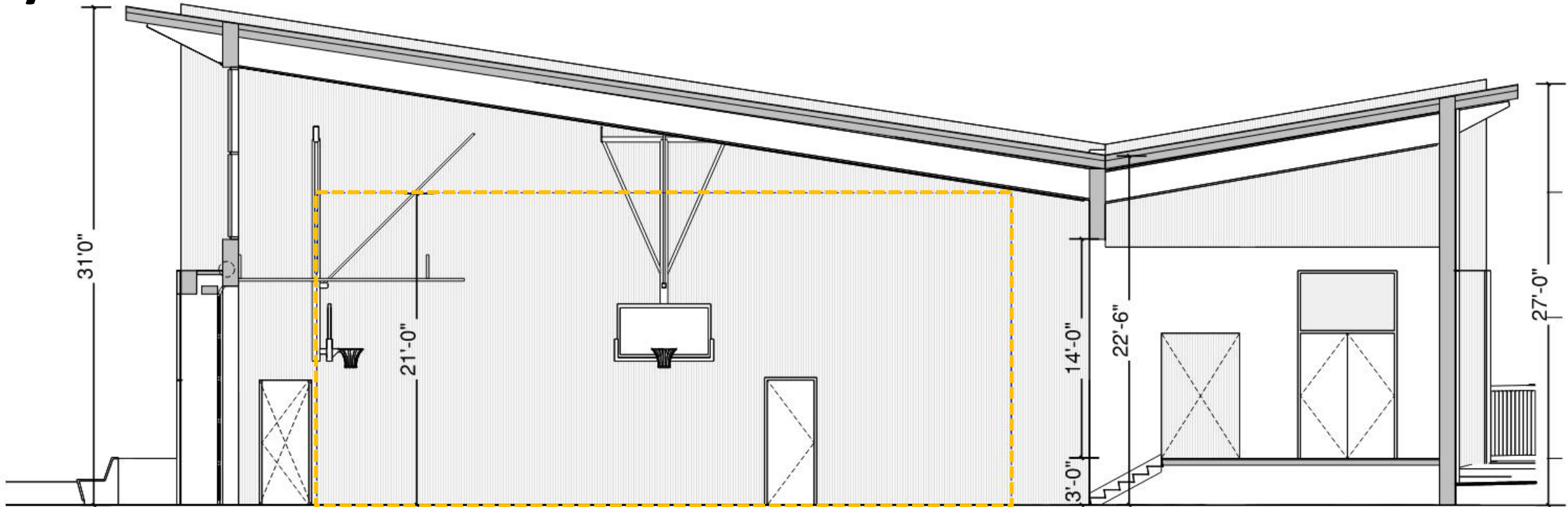


South Elevation - Tectum

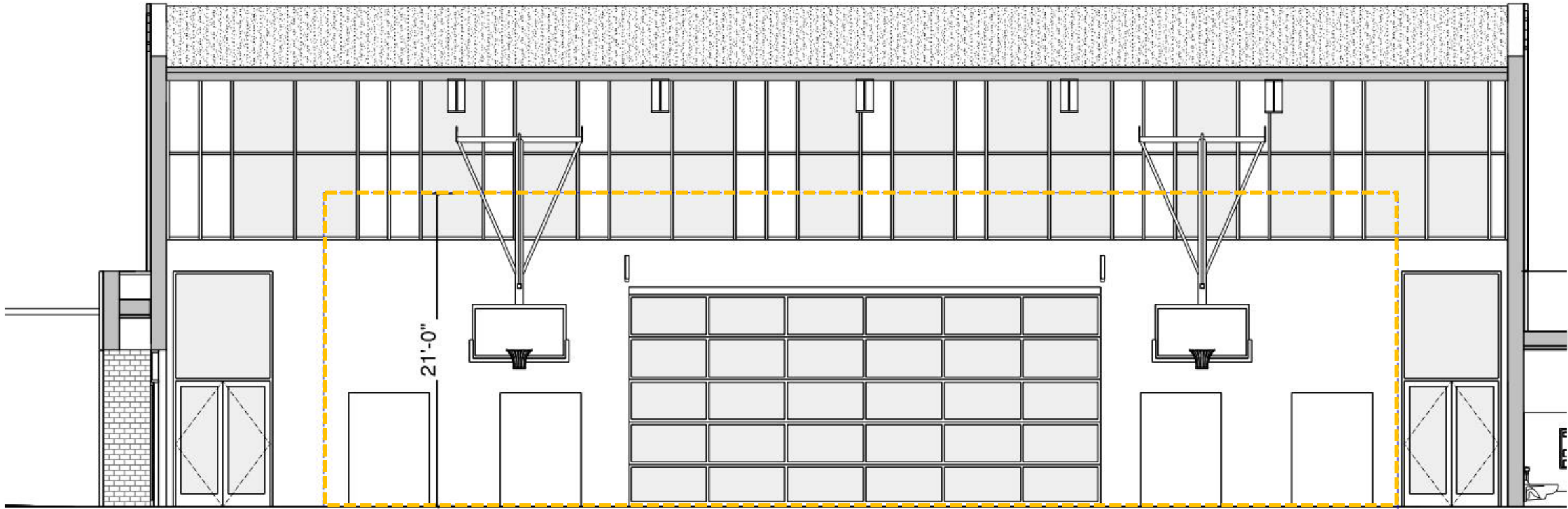


Stage Wall - Plan

Butterfly Scheme



North/South Section



East/West Section

Round /suspended

LUMINIS®

HC2810/HC2815 SERIES HOLLOWCORE PENDANT DOWN/UP LIGHT

TYPE: _____ QUANTITY: _____ PROJECT: _____

CATALOG NUMBER:

FIXTURE DOWNLIGHT UPLIGHT VOLTAGE FINISH OPTION OPTION OPTION



- 1- Surface mounting bracket
2- Spun aluminum housing
3- Curved LED array
4- HC2810: Semi opaque double layer Polyethylene lens
- HC2815:** Aluminum reflector. Includes an acrylic diffuser disk to eliminate glare from the LED boards.
Inner surface: Specular anodized.
Exterior surface: Satin anodized natural aluminum. Exterior of aluminum reflector can be painted to match housing finish (option ASP).

All stainless steel hardware

HC2810



HC2815



MATERIALS

Hollowcore is made of an aluminum housing which houses integral drivers, and a die-cast aluminum heat sink which supports the LED engine and shade as well as dissipates heat. Hollowcore is available with a choice of polyethylene lens or aluminum anodized reflector. Both options offer a distinct look and different distributions. The illumination is provided by an array of four curved LED boards.

ELECTRICAL

DRIVER Standard driver is 0-10V dimming-ready (dims to 1%) with: 120-277 multi-volt compatibility (50-60Hz), operating temperature range of -20 C/-4 F to 50 C/122 F, output over voltage protection, output over current protection and output short circuit protection with auto-recovery. Optional 347V driver.

LED 2700K, 3000K, 3500K, 4000K CCT with 80CRI.

LIFE

60,000hrs L₇₀B₅₀ (based on IESNA TM-21 Test Method and LM-80 data).

FINISH

Five-stage preparation process including preheating of cast aluminum parts for air extraction, and an environmentally friendly alloy sealant. Polyester powder coating is applied through an electrostatic process and oven cured for long term finish.

MOUNTING

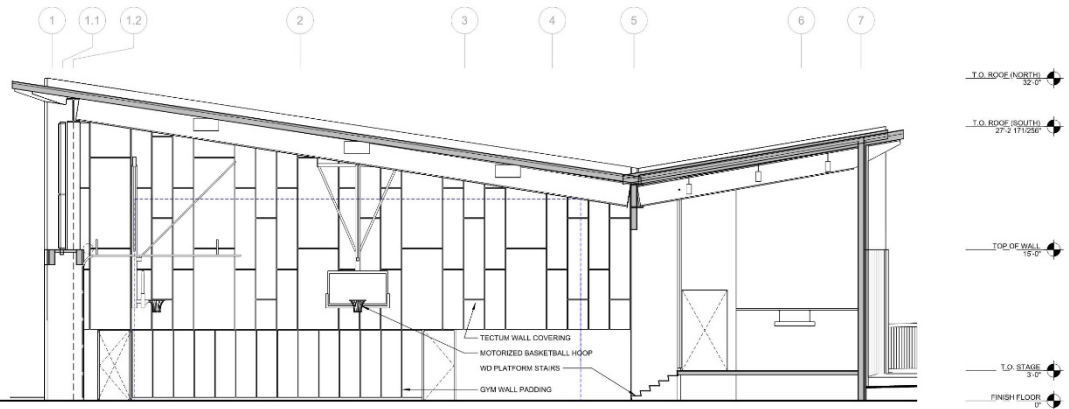
Maximum weight: 40 lbs (18 kg).
Mounts aligned over a standard 4" (102mm) octagonal electrical box with a set of six additional anchoring hardware by others. (See installation sheet for details.)

CERTIFICATION

Certified and approved as per CSA C22.2 No.: 250.0 standard and ANSI/UL 1598 standard, for Dry and Damp Location. Rated IP22.



October 2022 Rev. 4



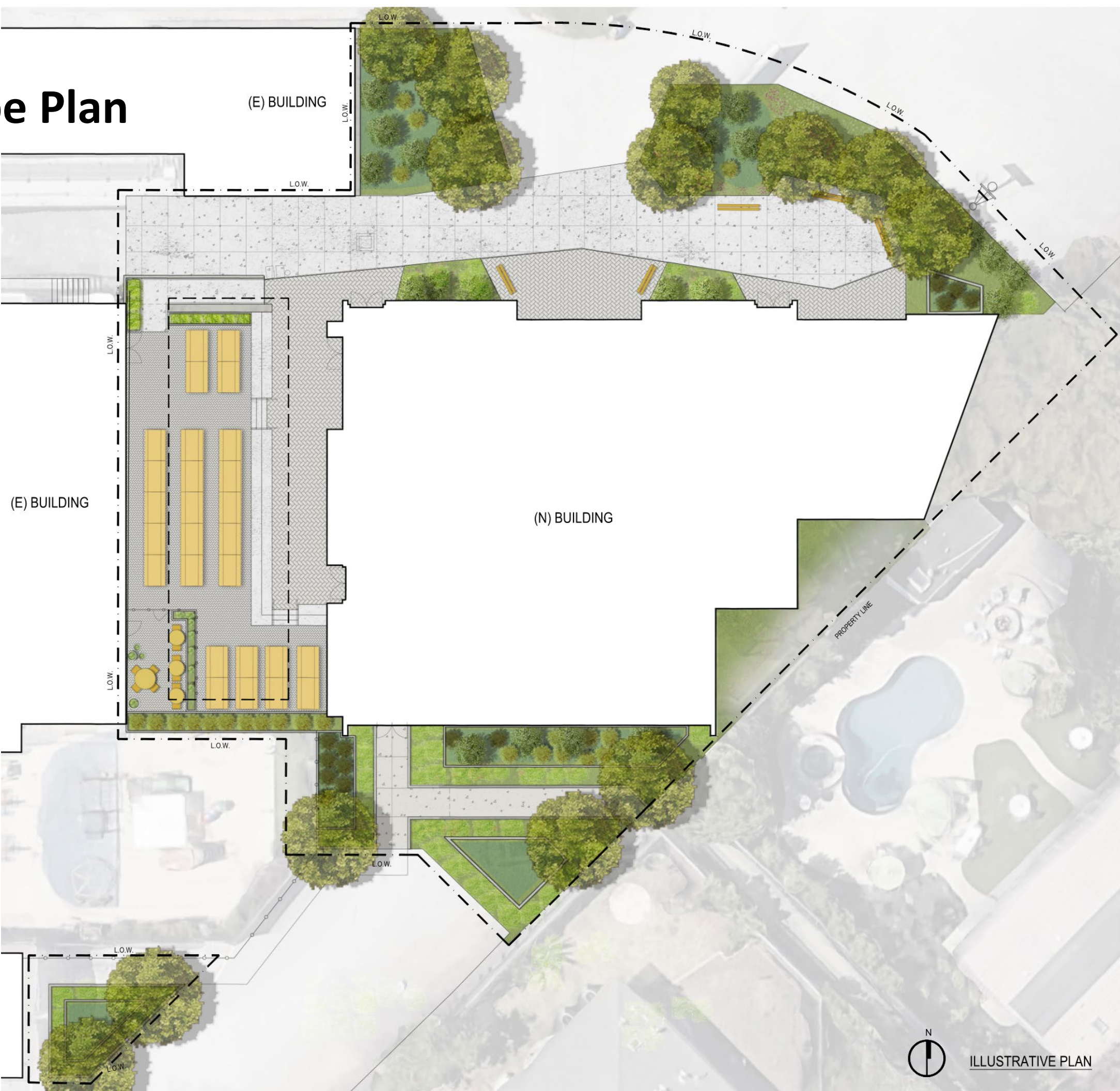
1 NORTH SOUTH SECTION
3/16" = 1'-0"



Site and Parking

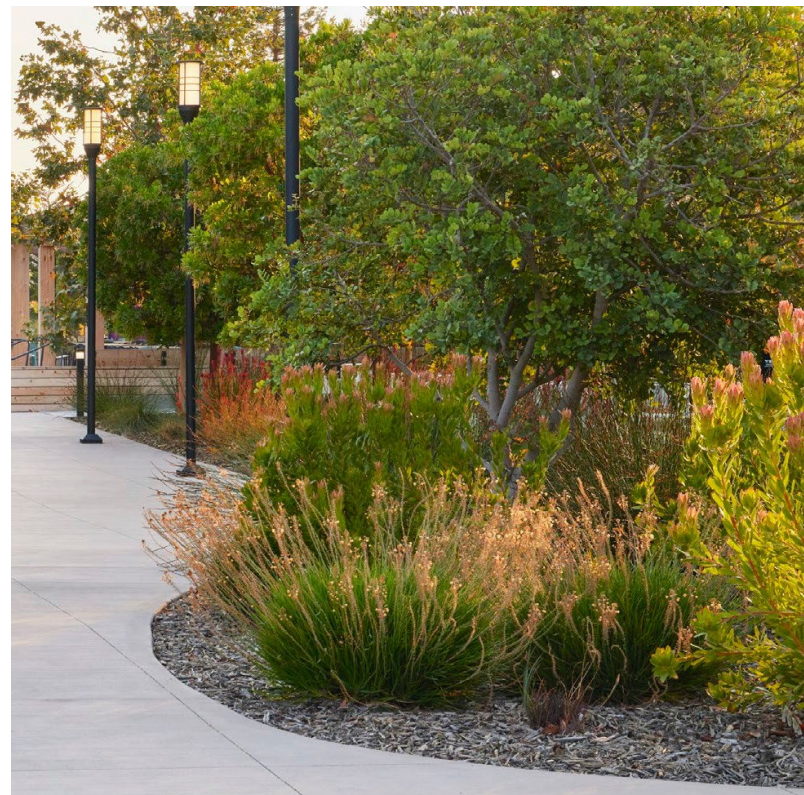
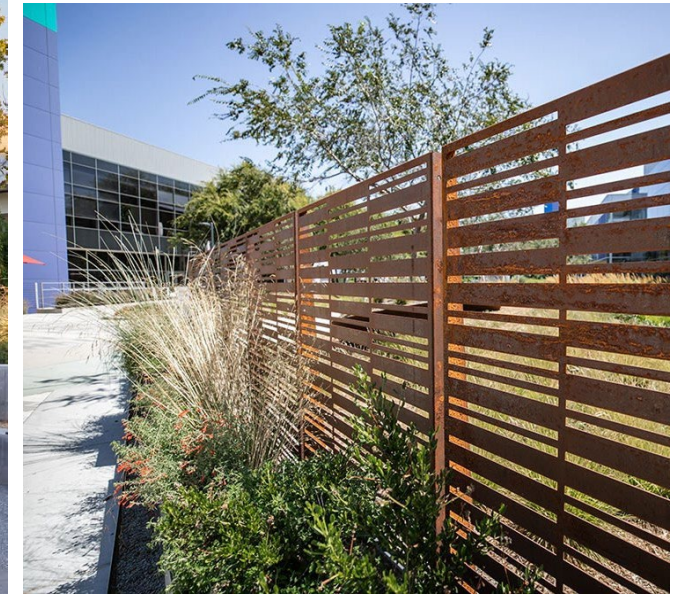
Site and Landscape Plan

- 1. Outdoor Dining
 - 1. Seat Steps
 - 2. Raised planters
 - 3. Dining Tables
- 2. Teacher Lounge Patio
 - 1. Concrete
 - 2. Planters & Pots
 - 3. Tables & Chairs
 - 4. Privacy Screen & Gate
- 3. Building Entry & Multi Use Area
 - 1. Concrete Pavers (Permeable)
 - 2. Benches
 - 3. Entry Planting
 - 4. Vine Trellis on Building
- 4. Stormwater Planting Areas
 - 1. Concrete curb
 - 2. Planting
- 5. BOH Entry
 - 1. Concrete paving (Impermeable)
 - 2. STPA Planter
 - 3. planting



Landscape Vision – enhanced amenities, soft edges, drought tolerant

- Attractive, functional, durable **student-focused design**
- Approach; design a planting palette that is **beautiful, tough, lower maintenance and low water use.**
- Activated spaces that create a **flexible indoor/outdoor experience.**
- Enhanced Paving & site furnishings **emphasize key areas**
- Effective, **beautiful stormwater management**
- Plant Selection: **Drought tolerant, climate appropriate mediterranean and California native plants.**
- Utilize a **mix of plant types** including long lived evergreen shrubs, flowering perennials and grasses.
- Irrigation will **use low water use drip irrigation** for plants and deep root watering tubes for trees. A new irrigation controller will be provided.



Site Plan



The site plan illustrates the layout of an existing and proposed facility. Key features include:

- EXISTING MPR**: A large rectangular building on the left.
- PROPOSED BUILDING**: A large, irregularly shaped building on the right.
- Fire Staging**: A red-hatched rectangular area with dimensions 26'-0" by 40'-0".
- Compact Stalls**: A series of numbered stalls (1-14) along Robert's Way, with dimensions ranging from 8'-0" to 22'-0".
- Robert's Way**: A road running diagonally across the bottom right.
- Other Features**: A blue hatched area, a green hatched area, and various smaller structures and landscaping elements.



Thank You